

Museen Basel

B

A

S

E

L

M

U

S

E

U

M

S

G

U

I

D

E

ENGLISH

2026

# MUSEUM TINGUELY

A CULTURAL COMMITMENT  
OF ROCHE



[www.tinguely.ch](http://www.tinguely.ch)





**We would like to wish you a warm welcome and hope you enjoy the museums of Basel!**  
**The Guide from A to Z: overview, special exhibitions and general information.**

Herzlich willkommen und viel Vergnügen in den Museen Basel! Der Guide von A bis Z: Übersicht, Sonderausstellungen und Serviceteil.

Bienvenue dans les musées de Bâle. Nous vous souhaitons de belles visites ! Le Guide de A à Z : vue d'ensemble, expositions temporaires et informations pratiques.

Benvenuti e buon divertimento nei musei di Basilea!  
L'opuscolo Guide dall'A alla Z: panoramica, esposizioni speciali, informazioni generali.

¡Bienvenidos! Esperamos que disfruten de los museos de Basilea. Guide de la A a la Z: sinopsis, exposiciones especiales y oferta de servicios.

Bem-vindo! Divirta-se nos museus de Basileia! O Guide de A a Z: panorama, exposições especiais e diversos serviços.

Добро пожаловать и приятного времяпрепровождения в музеях Базеля! Путеводитель от А до Я: обзоры мероприятий, тематические выставки и информация для посетителей.

バーゼルによろこそ！同市にある数々の博物館をお楽しみください！！  
AからZまでガイド：概要、特別展示、各種サービスまで。

欢迎光临巴塞尔博物馆，祝您在此度过愉快的时光！  
完全指南：概览，特别展览和服务。

**[www.museenbasel.ch](http://www.museenbasel.ch)**

WELCOME

# CONTENTS

- 1 Anatomisches Museum der Universität Basel → p. 7
- 2 Antikenmuseum Basel und Sammlung Ludwig → p. 7
- 3 Antikenmuseum Basel und Sammlung Ludwig, Skulpturhalle → p. 8
- 4 Augusta Raurica, Augst → p. 8
- 5 Ausstellungsraum Klingental → p. 8
- 6 Basler Papiermühle → p. 11
- 7 Cartoonmuseum Basel – Zentrum für narrative Kunst → p. 11
- 8 Dreiländermuseum, Lörrach DE → p. 14
- 9 Feuerwehrmuseum Basel → p. 17
- 10 Fondation Beyeler, Riehen/Basel → p. 17
- 11 Hafenmuseum – Verkehrsdrehscheibe Schweiz → p. 18
- 12 HEK (Haus der Elektronischen Künste), Münchenstein/Basel → p. 21
- 13 Historisches Museum Basel – Barfüsserkirche → p. 22
- 14 Historisches Museum Basel – Haus zum Kirschgarten → p. 27
- 15 Historisches Museum Basel – Musikmuseum → p. 22
- 16 Jüdisches Museum der Schweiz → p. 27
- 17 Kulturstiftung Basel H. Geiger | KBH.G → p. 27
- 18 Kunst Raum Riehen → p. 28
- 19 Kunsthalle Basel → p. 28
- 20 Kunsthaus Baselland, Münchenstein/Basel → p. 32
- 21 Kunstmuseum Basel → p. 35
- 22 Mühlemuseum, Münchenstein/Basel → p. 38
- 23 MUKS – Museum Kultur & Spiel Riehen → p. 41
- 24 Museum.BL, Liestal → p. 41
- 25 Museum der Kulturen Basel → p. 42
- 26 Museum für Musikautomaten, Seewen SO → p. 47
- 27 Museum Kleines Klingental → p. 47
- 28 Museum Tinguely → p. 48
- 29 Naturhistorisches Museum Basel → p. 52
- 30 Novartis Pavillon → p. 52
- 31 Pharmaziemuseum der Universität Basel → p. 55
- 32 SAM Schweizerisches Architekturmuseum → p. 55
- 33 Sammlung Friedhof Hörnli, Riehen/Basel → p. 56
- 34 Schaulager, Münchenstein/Basel → p. 56
- 35 Spielzeug Welten Museum Basel → p. 56
- 36 Vitra Design Museum, Weil am Rhein DE → p. 59

The most beautiful museum gardens → p. 2–5

Newly presented → p. 12–13, 24–25, 44–45

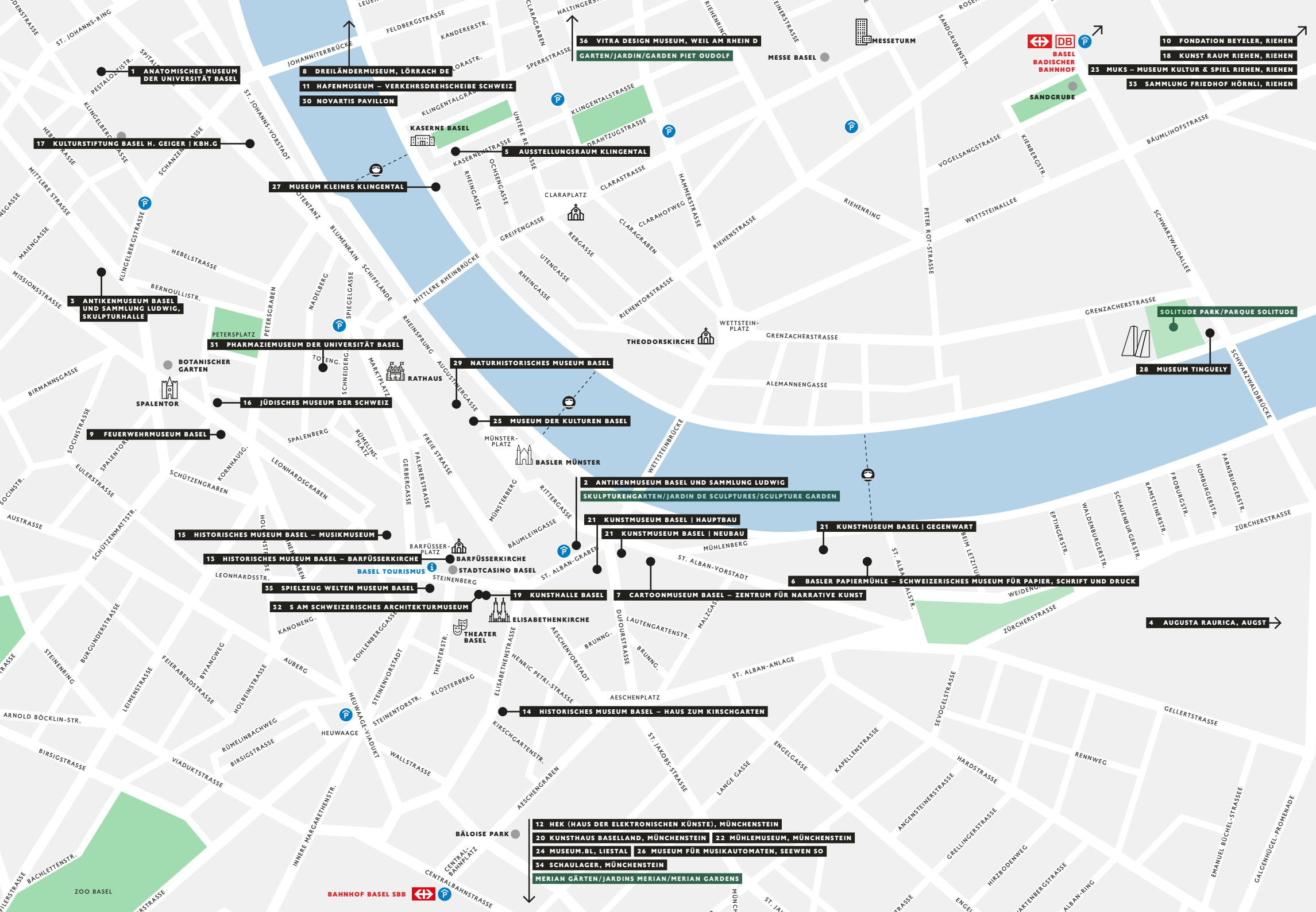
Highlights 2026 → p. 36–37

Creative Cosmos → p. 60–65

Essentials → p. 66–69

Publication details → p. 69





**Artistically arranged wilderness →**

This garden designed by Dutch landscape architect Piet Oudolf (b. 1944) has adorned Vitra Campus since 2020.

The artistically arranged “wilderness” comprising around 30,000 plants gives the surrounding architecture a different environment and offers visitors a close-up experience of nature’s annual cycle. Plants with mysterious names such as *Persicaria amplexicaule* provide the framework for the garden, which exists without solid structural elements. The garden is not merely decorative, but supplements the architecture and places it in a new context. It can be accessed free of charge at anytime.

**36 | Vitra Design Museum → P. 59**

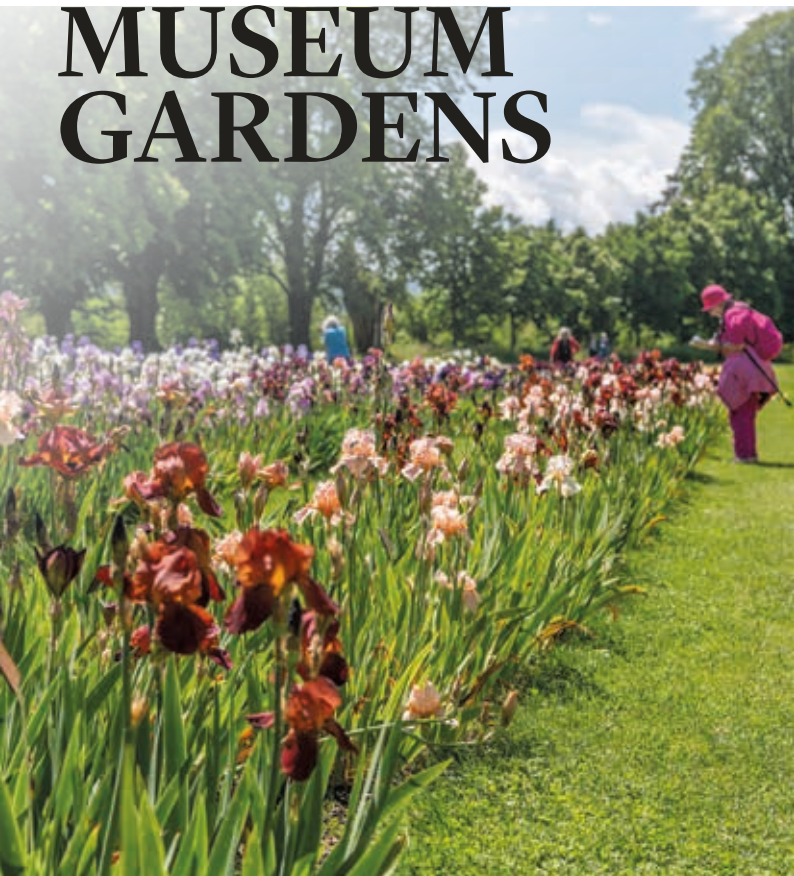
**Charles-Eames-Strasse 2,  
Weil am Rhein DE, +49 7621 702 32 00  
[www.design-museum.de](http://www.design-museum.de)**

Photo: Dejan Jovanovic,

© Vitra Design Museum, Weil am Rhein DE

**Eye-catching**

# THE MOST BEAUTIFUL MUSEUM GARDENS





#### ← Blossoming collections in the Merian Gardens

In the Merian Gardens, a generously spaced botanical gardenscape on the outskirts of Basel, the collections are not exhibited behind glass, but grow and bloom by themselves. With its impressive range of flowers, the former country residence of agronomist and philanthropist Christoph Merian (1800–1858) invites visitors to linger and to recuperate. The Merian Gardens host around 7,000 different plant species, including the world-famous iris collection. The gardens offer not only relaxation, but also guided tours, practical gardening advice, open-air concerts and the Mühlemuseum. Open daily from 8 a.m. until sunset, free of charge.

##### **Merian Gärten**

**Vorder Brüglingen 5, +41 61 319 97 80**

**[www.meriangärten.ch](http://www.meriangärten.ch)**

Europe's largest publicly accessible collection of bearded iris,  
© Christoph Merian Stiftung, Kathrin Schulthess



#### **Art and repose in Kleinbasel →**

In Kleinbasel there is a green oasis called Solitude Park, where visitors can encounter Jean Tinguely's *Schwimmwasserplastik* (1980), Niki de Saint Phalle's *Gwendolyn* (1966) and Bernhard Luginbühl's *Beteigeuze* (1996) placed between century-old trees. In summer, Museum

Tinguely also uses the green site as a location for its popular monthly *Sound Bar* with its DJs. Those keen on swimming in the Rhine can step into the river directly from the museum and drift downstream towards the centre of Kleinbasel. The Solitude Park and Tinguely Beach can be accessed free of charge at any time.

**28 | Museum Tinguely → p. 48**  
**Paul Sacher-Anlage 1, +41 61 681 93 20**  
**[www.tinguely.ch](http://www.tinguely.ch)**

© 2025 Museum Tinguely, Basel, Matthias Willi



### ← Idyllic sculpture garden

In the Antikenmuseum's outdoor area, visitors will find five marble copies of antique sculptures with links to the objects displayed in the museum itself. The figures shown are all connected to outdoor activities – either they were revered in outdoor settings, were hunted in woods or conducted sports in the searing heat of Greece. The statues represent important Roman copies of ancient Greek masterpieces from the 4th to the 2nd century BC that no longer exist in the original. In Summer, the sculpture garden, which embellishes the idyllic inner courtyard and its bistro, can be accessed free of charge during the opening hours.

**2 | Antikenmuseum Basel und Sammlung Ludwig → P. 7**

**St. Alban-Graben 5, +41 61 267 01 12**

**[www.antikenmuseumbasel.ch](http://www.antikenmuseumbasel.ch)**

**Tue/Wed 11 a.m.–5 p.m.; Thu/Fri 11 a.m.–10 p.m.;**

**Sat/Sun 10 a.m.–4 p.m.**

© Antikenmuseum Basel und Sammlung Ludwig, Ruedi Habegger





**Anatomisches Museum  
der Universität Basel**

A journey through the  
digestive tract

Loops of small intestine and arteries  
filled with latex, dating from 1925,  
collection of the Anatomical Museum  
of the University of Basel

**Antikenmuseum Basel und  
Sammlung Ludwig**

Vanquishing the three-  
headed hellhound

Photo: Flavia Schaub, Antikenmuseum  
Basel und Sammlung Ludwig





**1** PESTALOZZISTRASSE 20  
WWW.ANATOMIE.UNIBAS.CH/MUSEUM

## **ANATOMISCHES MUSEUM DER UNIVERSITÄT BASEL**

Discover the fascinating world of human anatomy. For over 200 years, unique specimens have been collected and displayed for teaching and research purposes – including the world's oldest anatomical skeleton. A place combining science, education and history.

---

→ **31.8.2026**

**200 Years of the Anatomical Museum Basel.**

**A Journey through the Centuries**

Anniversary exhibition on the 200-year history of the museum.

---

**17.9.2026–31.8.2027**

**Trust Your Gut – A Journey Through the Digestive Tract**

Experience an interactive journey through the human digestive tract – from the first bite to the final step of digestion. For children, there is a special discovery trail: “What happens to my lunch?” – playful, educational and full of humour.



**2** ST. ALBAN-GRABEN 5  
WWW.ANTIKENMUSEUMBASEL.CH

## **ANTIKENMUSEUM BASEL UND SAMMLUNG LUDWIG**

An outstanding collection of Egyptian, Greek, Italic, Etruscan and Roman works of art flanked by temporary exhibitions on history, religion, art and everyday life in various eras.

---

→ **29.3.2026**

**Hero Games. Discover the Legend Within You.**

The exhibition takes the form of a game in which visitors become characters embarking on an adventurous journey. Delving into mythical worlds, they carry out the famous missions of the great heroines and heroes in antiquity.

---

**18.10.2026–18.4.2027**

**On the move! What moves people – in the past  
and the present?**

What makes people leave their native country? What consequences did and does such mobility have for the societies involved? The special exhibition offers visitors a unique opportunity to explore this highly topical issue from a historical perspective.





**3** MITTLERE STRASSE 17  
WWW.ANTIKENMUSEUMBASEL.CH

## ANTIKENMUSEUM BASEL UND SAMMLUNG LUDWIG, SKULPTURHALLE

The Skulpturhalle boasts one of the world's largest collections of plaster casts of ancient sculpture, as well as the only known complete reconstruction of Athens' Parthenon sculptures.



**4** GIEBENACHERSTRASSE 17, 4302 AUGST  
WWW.AUGUSTARAURICA.CH

## AUGUSTA RAURICA

The impressive theatre, the museum with changing exhibitions, a Roman house, over 20 monuments as well as workshops, guided tours and events, make a trip to the largest archaeological park in Switzerland an unforgettable experience.

### 1.1.–31.8.2026 **The Perfect Dinner. Romans, Power and Rubbish, Part II**

The exhibition focuses on Roman food culture and takes a look behind the scenes of a luxurious banquet in Augusta Raurica around 39 AD. There is also a varied supporting program including culinary workshops and family tours.



**5** KASERNENSTRASSE 23  
WWW.AUSSTELLUNGSRAUM.CH

## AUSSTELLUNGSRAUM KLINGENTAL

Ausstellungsraum Klingental offers a platform for the exploration of artistic positions and is a place of encounter between contemporary art and the public.

### 18.1.–1.3.2026 **One One**

The group exhibition brings together works by four female artists from Basel: Martina Böttiger, Esther Hunziker, Rosanna Monteleone and Marion Ritzmann. Different materialities, different forms of expression and individual perspectives collide and yet have things in common. One, but not the same, they each support the other in a loose connection.

### 15.3.–26.4.2026 **Still Leben – Laut Malen**

The group exhibition invites visitors to reflect on and discuss the agency of art. With Camille Lütjens, Cassidy Toner, Charles Benjamin, Golnaz Hosseini, Irène Zurkinden, Isadora Vogt, Ivan Mitrovic, Jacob Schenck, Jan Kiefer,



**Antikenmuseum Basel und  
Sammlung Ludwig, Skulpturhalle**

One of the world’s largest collections  
of plaster casts of ancient sculpture

© Ruedi Habegger, Antikenmuseum Basel  
und Sammlung Ludwig

**Augusta Raurica**

Roman culinary culture:  
What does it take for a perfect dinner?

Augusta Raurica, Augst





### Ausstellungsraum Klingental

Live quietly, paint loudly

Jan Kiefer: *Untitled (Apples after Cézanne)*,  
2022, oil on cotton, 50 x 40 cm

### Ausstellungsraum Klingental

Through the lenses of Basel-based  
art critic Maria Netter

Maria Netter: *Werke von Albert Schilling im  
Schweizer Pavillon*, 1962, Venice Art Biennale,  
© photo: Maria Netter, SIK-ISEA, Zürich,  
courtesy Fotostiftung Schweiz



Lionne Saluz, Marie Lotz, Melissa A. Torres, Mimmo Haradithadi, Othmar Farré, Raphael Widmer, Selina Lutz, Viktor Korol and Yves Born.

---

### **10.5.–21.6.2026 Maritime Basel**

The group exhibition spotlights Basel's role as a hub of trade and culture. Pavel Aguilar, Jan Engels, Bettina Eichin, David Jacques, Dorota Lukianska, Cora Piantoni, Jan van Oordt and the collective The New Liquidity explore the city's maritime history and its present-day port activities. Dialogues with port workers and activists provide insights into the social and economic transformation of the port area.

---

### **10.5.–21.6.2026 Installation View**

Mostly known as an influential Basel-based Swiss art critic, Maria Netter (1917–1982) captured the essence of exhibitions across Switzerland from the 1950s to the 1970s with her camera. Her candid, intuitive black-and-white images offer a deeply personal view of art in space. With their composition and atmosphere, Maria Netter's exhibition views transcend traditional photography.



**6** ST. ALBAN-TAL 37  
WWW.BASLERPAPIERMUEHLE.CH

## **BASLER PAPIERMÜHLE – SCHWEIZERISCHES MUSEUM FÜR PAPIER, SCHRIFT UND DRUCK**

Situated in a medieval paper mill, the museum illustrates the book-production process from handmade paper to finished book. Its substantial collection presents the history of paper, writing and print, while the on-site paper manufactory invites visitors to watch paper being made – or even try it out for themselves.



**7** ST. ALBAN-VORSTADT 28  
WWW.CARTOONMUSEUM.CH

## **CARTOONMUSEUM BASEL – ZENTRUM FÜR NARRATIVE KUNST**

Cartoonmuseum Basel is the only Swiss museum and centre of excellence devoted to narrative art. It makes an important contribution to the debate surrounding this art form and the social issues that it deals with.



Curators' stories

# NEWLY

## Space for art →

“The small courtyard of the Kunstmuseum Basel’s main building is a favourite spot for visitors to pause, read or simply relax. With a new commission by Basel-based artist Renée Levi, this space has now also been given an artful touch – a matter close to the museum’s heart. *Mira* is spray-painted on the wall, improvised in Levi’s unmistakable style, with her signature ‘ée’ writ large, bringing a spark of colour and a playful note to the courtyard. It underscores the museum’s commitment to celebrating both local and global voices in art across eight centuries right up to the present.”

Elena Filipovic, director and curator, with artist Renée Levi

**21 | Kunstmuseum Basel → P. 35**

### ← Living for living

“In a time of housing shortages, rising rents and increasing social isolation, we must find forms of living that place greater value on solidarity and sustainability. Cooperative housing is one of the answers. It provides affordable living space and a strong emphasis on community, showing that housing can be more than just a commodity. Basel has a surprisingly large number of case examples. Our exhibition and the associated publication *Wohnen fürs Wohnen* put them in the spotlight and ask the pertinent question: How do we plan and design a city in which living space is not a luxury?”

Anaïs Auprêtre de Lagenest, curator and scenographer

**32 | S AM Schweizerisches Architekturmuseum → P. 55**

# PRESENTED

A photograph of two women standing in front of a large, abstract artwork. The woman on the left has blonde hair and wears glasses, a dark blue halter top, and blue jeans. The woman on the right has short grey hair and wears glasses, a black t-shirt, and dark trousers. The artwork behind them features a large, dark, swirling shape at the top, resembling a stylized '2' or a knot, and a horizontal, textured band below it. The floor is a light-colored, polished surface.

→ 15.3.2026

### **Christophe Blain. Paradis perdu**

Christophe Blain (b. 1970) is one of France's most renowned comics authors. His repertoire ranges from ink sketches to subtle paintings, and from the political satire *Weapons of Mass Diplomacy* to the non-fiction comic *World Without End*. The comprehensive retrospective at Cartoonmuseum Basel presents all facets of this comics star.

---

28.3.–21.6.2026

### **José Muñoz**

Argentine comics artist José Muñoz (b. 1942) uses stark black-and-white contrasts for narratives ranging from dramatic crime stories about detective Alack Sinner to a sensitive biography of jazz legend Billie Holiday. Originals, sketches and colour works provide a comprehensive retrospective.

---

4.7.–15.11.2026

### **Emil Ferris**

Emil Ferris (b. 1962) from the USA ranks among the most important of contemporary comics artists. Her distinctive ball-point pen drawings are highly expressive and offer profound insights into the human psyche.

---

28.11.2026–7.3.2027

### **Barbara Yelin**

Munich-based comics artist Barbara Yelin (b. 1977) is known for her sensitive, atmospherically dense, drawn and painted graphic novels. She thinks in political terms and often presents her themes in gripping portraits. This, her first major solo exhibition, features originals, independent works and illustrations.



**8** BASLER STRASSE 143, 79540 LÖRRACH DE  
WWW.DREILAENDERMUSEUM.EU

**DREILÄNDERMUSEUM**

The permanent, interactive *Three Countries* exhibition shows the past and present of the border region where France, Germany and Switzerland come together. In German and French.

---

31.1.–5.4.2026

### **Inspiration 12 – Animals**

Since 2013, the inclusive art project *Inspiration* brings people with disabilities from three countries into dialogue with the collection of the Dreiländermuseum. Originals become the source for new creative works on the animal world – ranging from the familiar to the fantastic.





**Cartoonmuseum Basel – Zentrum für narrative Kunst**  
 Depths of the human psyche

© Emil Ferris: *My Favourite Thing Is Monsters*, 2017



**Dreiländermuseum**  
 Art or vandalism?

© Martin Schulte-Kellinghaus



### **Dreiländermuseum**

In dialogue with the collection –  
an inclusive art project

Alban Spitz: *4 fishes*, oil painting,  
museum collection

### **Fondation Beyeler**

A pioneer of modern art:  
Paul Cezanne

Paul Cezanne: *La Montagne Sainte-Victoire  
vue des Lauves*, 1902–1906, oil on canvas,  
65 x 81 cm, private collection



## **17.4.–12.7.2026 Legal – Illegal. Graffiti, Street Art & Murals in the tri-border region**

The exhibition shows the development of graffiti and street art in the three-country region. Photos by Martin Schulte-Kellinghaus document the journey from rebellious expression in the 1980s to today's murals and urban art projects.

---

## **19.9.2026–18.4.2027 At home and on the move. Migration and mobility in the tri-border region**

The overview exhibition by the Upper Rhine Museum Network shows how migration and mobility have shaped the three-country region, with topics covering emigration and immigration, commuting, consumption and smuggling, as well as education, religion and family.



**9** SPALENVORSTADT 11, [WWW.BS.CH/JSD/RETTUNG/UNSERE-ORGANISATION/FEUERWEHR/FEUERWEHRMUSEUM](http://WWW.BS.CH/JSD/RETTUNG/UNSERE-ORGANISATION/FEUERWEHR/FEUERWEHRMUSEUM)

## **FEUERWEHRMUSEUM BASEL**

A permanent exhibition on the history of firefighting, from medieval hand-operated spraying contraptions to modern oxygen inhalers.



**10** BASELSTRASSE 101, 4125 RIEHEN/BASEL  
[WWW.FONDATIONBEYELER.CH](http://WWW.FONDATIONBEYELER.CH)

## **FONDATION BEYELER**

Renzo Piano's iconic museum building is a testimony to the unique harmony of art, architecture and nature. In addition to its high-calibre exhibitions and its ambitious schedule of events, the Fondation Beyeler is internationally renowned for its outstanding collection of modern and contemporary art.

---

## **→ 25.1.2026 Yayoi Kusama**

First complete retrospective in Switzerland of the work of Yayoi Kusama (b. 1929), one of the most pioneering artists of our time. Organised in close collaboration with the artist and her studio, the show offers a holistic overview of Kusama's entire career, spanning more than seven decades.

---

## **25.1.–25.5.2026 Cezanne**

For the first time in its history, the Fondation Beyeler is dedicating a solo exhibition to Paul Cezanne (1839–1906) – a pioneer of modern art and one of the most important artists in its collection. The exhibition focuses on the final and most significant phase of the French artist's career: powerful portraits, bold compositions of bathers, radiant landscapes from Provence and Montagne Sainte-Victoire, which he captured from ever-changing perspectives.

## **24.5.-13.9.2026 Pierre Huyghe**

Pierre Huyghe (b. 1962) is known for his boundary-crossing works in which art and life, nature and technology, fiction and reality merge. His works are created at the intersection of various disciplines and combine cinematic, sculptural, technological, digital and biological elements to form living and dynamic systems.

---

## **18.10.2026-10.1.2027 Ruth Asawa**

The artist's first retrospective in Europe impressively demonstrates how Ruth Asawa (1926-2013) transformed the simplest of materials into fascinating objects, thereby blurring the boundaries between abstraction and figuration, art and craft, action and contemplation. The versatile work of this American artist with Japanese roots includes wire and bronze sculptures, drawings, prints, paintings and works in public spaces.



**11** WESTQUAISTRASSE 2  
WWW.HAFENMUSEUM.CH

## **HAFENMUSEUM – VERKEHRS- DREHSCHIBE SCHWEIZ**

The exhibition provides information about the Rhine, shipping on the Rhine and its history, the importance of logistics in Basel and the operation of the Port of Basel. It features numerous models of ships and the entire port area as well as a state-of-the-art ship navigation simulator. Special exhibition drawers have been set up for children.

---

## **→ 15.2.2026 Life at Sea**

The travelling exhibition by the German Seamen's Mission offers an authentic insight into life at sea. The photos and descriptions focus on camaraderie on board, but also on life in isolation and the challenges of the maritime profession. The exhibition aims to raise public awareness of the indispensable work performed by seafarers.

---

## **22.10.2026-22.2.2027**

### **At home – on the move. Life on board**

This network exhibition of around 40 museums in north-western Switzerland, Alsace and southern Baden tells stories of everyday life on a ship in the past and present. It highlights how living and working on board requires a wide range of skills. Skippers and former skippers' children talk about their life on board and how homesick they felt.



### **Fondation Beyeler**

Transcending borders – the work  
of French artist Pierre Huyghe

Pierre Huyghe: *Liminal*, 2024-on-going,  
courtesy of the artist and Galerie Chantal Crousel,  
Marian Goodman Gallery, Hauser & Wirth,  
Esther Schipper, TARO NASU and Anna Lena Films

### **Hafenmuseum – Verkehrsdrehscheibe Schweiz**

Far away from home

*Scrub, scrub, scrub*,  
photo: Buen Ray Ortega /  
ITF Seafarers' Trust





### **HEK (Haus der Elektronischen Künste)**

Experiencing threatening weather conditions through sound and vibration

Raphaël Fischer-Dieskau: *Stormbrewer2000*, 2023, © photo: courtesy of the artist

### **HEK (Haus der Elektronischen Künste)**

New creations by the winners of the *Pax Art Awards 2025*

Lukas Truniger: *Lost in Rasterized Translation*, 2025, Paris Fashion Week – Hamcus Showroom, Paris, © photo: courtesy of the artist



**12**FREILAGER-PLATZ 9, 4142 MÜNCHENSTEIN/BASEL  
WWW.HEK.CH

# HEK (HAUS DER ELEKTRONISCHEN KÜNSTE)

HEK (House of Electronic Arts) is the Swiss centre of excellence and museum for media art. It is dedicated to digital culture and new art forms of the information age.

---

- **1.2.2026 Regionale 26. Frequency: Dark and Stormy**  
*Regionale 26* explores the current weather situation. Threatening weather conditions such as storm, rain, lightning and thunder create the atmospheric framework of the exhibition. The works generate frequencies that can be perceived as sound or vibration or, more figuratively, in the forms of mood, resonance or reflections on the current political and social climate.
- 

**14.2.-19.4.2026 Lukas Truniger, Isabell Bullerschen, Rhona Mühlebach – Swiss Media Art – Pax Art Awards 2025**

This exhibition features new works by Lukas Truniger (b. 1986), Isabell Bullerschen (b. 1985) and Rhona Mühlebach (b. 1990), recipients of the *Pax Art Awards 2025*. With these awards, Art Foundation Pax, in collaboration with HEK, honours and supports the media-specific practices of Swiss artists.

---

**10.5.-9.8.2026 New Rituals [for the End of the World]**

This exhibition explores new rituals imagined as ways of coping with today's world. Often, new technologies are intertwined with spiritual practices. With their work, the artists address the phenomenon of "re-enchantment" in our contemporary technologised societies.

---

**22.8.-15.11.2026 Studio Lemercier**

Studio Lemercier's work investigates manners of interactions between space, light, technology and perception. Its first major exhibition in Switzerland features an installation that enables visitors to experience invisible structures such as networks, codes and ecological processes.

---

**29.11.2026-4.1.2027 Regionale 27**

In connection with the cross-border project *Regionale*, HEK presents contemporary art from the three-country region.



## 13–15 HISTORISCHES MUSEUM BASEL

The most important museum of cultural history on the Upper Rhine, housed in three separate buildings.



**13** BARFÜSSERPLATZ 7  
WWW.BARFUESSERKIRCHE.CH

### HISTORISCHES MUSEUM BASEL – BARFÜSSERKIRCHE

Local urban history from prehistory to the present, including highlights such as the Basel Cathedral treasury, fragments of Basel's *Dance of Death*, medieval tapestries, a giant cabinet of curiosities, Burgundian booty, archaeological finds and *Leaps in Time – A Brief History of Basel* (permanent exhibition).

#### → 28.6.2026 **Treasure Hoards – Hidden, Lost, Found**

One of the largest Roman silver treasure hoards in Europe. Gold Celtic jewellery that once adorned giant statues of gods. Or a master thief's loot that was thrown into the Rhine: The exhibition explores the legacy of the most spectacular treasure finds from the Basel region.

#### 15.10.2026–4.7.2027 **Nuclear Power: Your Decision**

The atomic energy debate has been ongoing since the 1960s. The arguments are numerous and the implications are momentous. The exhibition illustrates the complex inter-relationships in a playful way and helps visitors form their own opinions. Shut down or expand? You decide.



**14** ELISABETHENSTRASSE 27  
WWW.HAUSZUMKIRSCHGARTEN.CH

### HISTORISCHES MUSEUM BASEL – HAUS ZUM KIRSCHGARTEN

The *Haus zum Kirschgarten* was originally the home and business premises of an 18th-century silk-ribbon manufacturer. Its period rooms and the temporary shows now afford us glimpses of how Basel's affluent bourgeoisie once lived.



**15** IM LOHNHOF 9  
WWW.MUSIKMUSEUM.CH

### HISTORISCHES MUSEUM BASEL – MUSIKMUSEUM

Switzerland's largest collection of musical instruments features instruments from five centuries and, in conjunction with them, a wide-ranging overview of European music history.



### Historisches Museum Basel – Barfüsserkirche

The most spectacular treasure finds in the Basel region

© Mark Niedermann

### Historisches Museum Basel – Barfüsserkirche

Nuclear power plants –  
shut down or expand?

© photo: Wolfgang Weiser





Curators' stories

# NEWLY PRESENTED

## ↑ The Owl Is Pink

“I’m looking forward to the stories of colourful things that the pink owl is going to tell in our exhibition. But wait a minute – a pink owl? Aren’t owls supposed to be brown, grey or white? This is exactly the point. The perception and the meaning of colours differ from person to person and from culture to culture. The exhibition has also been designed to meet various needs, such as those of children or people with impaired eyesight or hearing, so that there are no barriers to fully engaging in it with all one’s senses. Active participation is expressly desired!”

Florence Roth, curator of the exhibition *The Owl Is Pink*

**25 | Museum der Kulturen Basel → P. 42**

↓ **A new site for education and experience**

“Being a Jew in Switzerland is different. Judaism has an uninterrupted history here, which is not the case in the neighbouring countries. Those who have roots here or managed to escape to Switzerland were spared the Shoah.

The new museum aims to show visitors and enable them to experience not only Switzerland’s Jewish past, but also its Jewish present. Jewish communities in this country are particularly diverse, comprising Alsatian, Eastern European, Maghrebian and American traditions.”

Dr. Naomi Lubrich, director and curator of the new permanent exhibition

**16 | Jüdisches Museum der Schweiz → P. 27**





## Jüdisches Museum der Schweiz

Museum facade with an adaptation of Frank Stella's work *Jeziory*, a reminder of the destroyed wooden synagogues of Eastern Europe

© Jüdisches Museum der Schweiz, Basel

## Kulturstiftung Basel H. Geiger | KBH.G

Homage to Japanese culture

Luciano Castelli: *Murasaki*, 2024, Kulturstiftung Basel H. Geiger | KBH.G, photo: Stefan Altenburger





**16** VESALGASSE 5  
WWW.JUEDISCHES-MUSEUM.CH

## JÜDISCHES MUSEUM DER SCHWEIZ

The Jewish Museum of Switzerland reopened in 2025 at Vesalgasse 5. The new location in the heart of Basel was once the medieval Jewish cemetery. An open-air installation of monumental gravestones shows its history. The frontispiece of the new museum is an adaptation of the artwork *Jeziory* by the US-American artist Frank Stella. The new permanent exhibition *Cult, Culture, Art. Jewish Experiences* presents the diversity of Jewish culture incorporating religion, history and space for debate.

### → **31.1.2027 Frank Stella and the Destroyed Wooden Synagogues**

In the early 1970s, Frank Stella (1936–2024) produced a series of works on the synagogues of Eastern Europe, called *Polish Village*. In this special exhibition, the museum juxtaposes Stella's abstract sculptures with models of the respective buildings.



**17** SPITALSTRASSE 18  
WWW.KBH.G

## KULTURSTIFTUNG BASEL H. GEIGER | KBH.G

The Kulturstiftung was founded in 2018 by artist and philanthropist Sibylle Piermattei-Geiger (1930–2020), together with her husband Rocco Piermattei. It was established to draw visitors into art experiences of a different kind without the need of any prior knowledge.

### → **15.2.2026 Whispers of Japan – Luciano Castelli**

In the latest exhibition of Swiss artist Luciano Castelli (b. 1951), earlier and recent works are combined to generate an intense dialogue with Japan. With previously unseen photographs and paintings presented on folding screens, he creates a poetic homage to Japanese culture.

### **12.6.–6.9.2026 Chloe Wise**

In a solo exhibition, Chloe Wise (b. 1990) explores our perception of reality – and what lies hidden beyond the reach of our senses and language. Drawing on philosophy, mythology and contemporary culture, the Canadian artist reflects on phenomena that resist definition, from the poetic to the uncanny, from angels to UFOs.

## **20.11.2026–14.2.2027 Out of Place –**

### **Out of Time: Mariana Cook**

In this exhibition, Mariana Cook (b. 1955) powerfully and poetically places glacial boulders at the centre of attention – those mighty, timeless stones that have been carried across continents by glaciers over millennia. The photo artist follows these silent witnesses of history and transforms them into striking visual narratives.

**18**

IM BEROWERGUT, BASELSTRASSE 71, 4125 RIEHEN/BASEL  
WWW.KUNSTRAUMRIEHEN.CH

**KUNST RAUM RIEHEN**

Kunst Raum Riehen is the public art and culture exhibition venue of the municipality of Riehen. Its focus is primarily on regional and contemporary works from all art disciplines, presented in temporary exhibitions.

---

## → **23.1.2026 Regionale 26. Phantoms**

Phantoms have evolved into a symbol of mystery and the unknown in various cultures. The exhibition presents works that transport the past to the present, with ghostly representations that include enigmatic ornaments and historical artefacts.

---

## **14.2.–19.4.2026 Double #3: Lionne Saluz / Sonia Kacem**

*Double* is an exhibition format that brings works by two artists with distinct artistic approaches into a dialogue with each other. The aim is to juxtapose regional and international works of art and thereby uncover unexpected thematic connections between two independent projects.

**19**

STEINENBERG 7  
WWW.KUNSTHALLEBASEL.CH

**KUNSTHALLE BASEL**

Since 1872, Kunsthalle Basel has brought groundbreaking artistic positions to the forefront. With great commitment, it places up-and-coming artists into the limelight long before they make it big elsewhere. A space for everyone who wants not just to see art, but to question, experience and debate it.

---

## → **23.8.2026 Coumba Samba – Kunsthalle Basel x Galerina: Back Wall Project**

In 2025, Kunsthalle Basel invited the London-based exhibition space Galerina to co-curate Coumba Samba's (b. 2000) project. The US-artist deals with the effects of institutional structures on both individual and collective identities through her multi-media and performative practice, questioning dominant cultural narratives.





**Kulturstiftung Basel  
H. Geiger | KBH.G**

From the poetic  
to the uncanny

Chloe Wise: *Numinous communion* (detail), 2025,  
© Chloe Wise, 2025

**Kunst Raum Riehen**  
Ghostly appearances

Walter Derungs: from the  
series *Archiv B*, 2021,  
courtesy of the artist,  
© photo: Walter Derungs, Basel





### Kunsthalle Basel

A creation by artist Coumba Samba on the rear wall of Kunsthalle Basel

Coumba Samba: *Wild Wild Wall*, 2025,  
Kunsthalle Basel, © photo:  
Philipp Hänger, Kunsthalle Basel

### Kunsthalle Basel

Erste Einzelausstellung in  
Europa von Shuang Li

Shuang Li: *With a Trunk of Ammunition Too*,  
2024, Prada Rong Zhai, Shanghai, CN,  
© photo: courtesy of the artist



### **23.1.–12.4.2026 Diambe**

In the first institutional solo exhibition of Diambe (b. 1993) in Switzerland, the artist presents an expansive installation that combines sculpture, painting and film. Rooted in their own identity, Diambe develops an artistic language that weaves nature, ritual and movement into hybrid narratives.

---

### **20.2.–17.5.2026 Dominique White**

In her first solo exhibition in Switzerland, Dominique White (b. 1993) presents a new group of sculptural works. Her sculptures imagine how Black life can point beyond the boundaries of self-definition. Drawing on theories of Black Subjectivity, Afrofuturism and Afro-pessimism, White brings together maritime myths of the Black diaspora and a poetics of the sea.

---

### **1.5.–9.8.2026 Janiva Ellis**

The largest institutional solo exhibition of Janiva Ellis (b. 1987) features a new body of paintings conceived specifically for this presentation. In her practice she explores tenaciously held myths of white supremacy that are firmly anchored in the dominant cultural narratives, and she reveals the contradictions and also the destruction that has followed in their wake.

---

### **12.6.–13.9.2026 Shuang Li**

In her first institutional solo exhibition in Europe, Shuang Li (b. 1990) presents works in performance, sculpture, video and digital formats. Her works reflect on global communication structures and the unequal distribution of information and attention and explore the relationships between humans and media.

---

### **28.8.–15.11.2026 Gili Tal**

The solo exhibition of Gili Tal (b. 1983) at Kunsthalle Basel marks the most comprehensive presentation of her work to date. Tal's artistic practice draws on the visual strategies of commercial image production to expose the aesthetics and ideologies of urban space.

---

### **13.9.2026–August 2027 Samuel Guerrero – Kunsthalle Basel x Cordova: Back Wall Project**

In 2026, Kunsthalle Basel is inviting the project space Cordova from Barcelona to co-curate the project of Samuel Guerrero (b. 1997). Guerrero's artistic practice revolves around the interplay of nature, technology and perception. He creates installations using wood, concrete, light and sound in which organic processes and mechanical systems interweave.

### **30.10.2026–24.1.2027   Özgür Kar**

The solo exhibition marks the institutional debut of Özgür Kar (b. 1992) in Switzerland. His multidisciplinary practice combines video, sculpture, animation and sound to create immersive environments that explore existential questions.

---

### **28.11.2026–3.1.2027   Regionale 27**

This annual group exhibition, conceived in the context of *Regionale*, is a cross-border cooperation project involving 20 institutions in France, Germany and Switzerland. It focuses on contemporary production by artists from the three-country region around Basel.



**20**

HELSINKI-STRASSE 5, 4142 MÜNCHENSTEIN/BASEL  
WWW.KUNSTHAUSBASELLAND.CH

**KUNSTHAUS BASELLAND**

Kunsthauus Baselland is among the foremost institutions housing contemporary art exhibitions in the Basel region. In 2024, it opened its new location, designed by Buchner Bründler architects, on the Dreispitz site in Basel.

---

### **→ 3.5.2026   Eva Lootz**

In a time of political and social upheaval, Eva Lootz (b. 1940) decided to live and work in Spain. Creating art was and is for her also an act of political resistance as well as social and personal resilience. In her understanding, being political means above all looking closely, listening carefully, and understanding what is being said or read.

---

### **6.2.–3.5.2026   Sounding the Interior.**

#### **Tamara Al-Samerraei and Mireille Blanc**

In their multilayered painterly practice, Tamara Al-Samerraei (b. 1977) and Mireille Blanc (b. 1985) draw inspiration from domestic spaces and everyday scenes. From there, each artist traces the interior in her own way – as a place for free thought, but also one for fragile and fleeting memories.

---

### **22.5.–16.8.2026   Traveling memories**

Travellers can teach us to think and act with greater openness in the here and now, as they fundamentally question closed spaces. The works of the invited artists all convey an elemental message: to be human has always meant leaving the familiar behind and venturing into the new and unknown. With Joana Escoval (b. 1982), Sofia Salazar Rosales (b. 1999), Aline Motta (b. 1974) and others.



### Kunsthalle Basel

Basic existential questions

Özgür Kar: *MACABRE*, 2021, Fondation Louis Vuitton, Paris, © photo: Marc Damage, courtesy of the artist and Fondation Louis Vuitton, Paris, Édouard Montassut, Paris and Emalin, London



### Kunsthau Baselland

Fragile and  
fleeting memories

Mireille Blanc: *Anniv (I)*,  
2024, 37 x 50 cm,  
© Mireille Blanc

**Kunsthaus Baselland**

Casting out into  
the unknown

Sofia Salazar Rosales:  
*Miedo al otro*, 2025,  
courtesy of the artist  
and ChertLüdde  
(Berlin), detail, photo:  
Natascha Libbert



**Kunstmuseum Basel | Neubau**

*The First Homosexuals. The Birth of New Identities, 1869–1939*

David Paynter: *Afternoon*, 1935, Brighton & Hove Museums, Brighton,  
all efforts have been made to contact the original rights owners  
for permission to use images of their work, but if you have any queries  
relating to the image used please email [info@kunstmuseumbasel.ch](mailto:info@kunstmuseumbasel.ch)





## **28.11.2026–January 2027 Regionale 27**

Annual group exhibition that is developed in cross-border cooperation between several institutions in Germany, France and Switzerland. It highlights contemporary local art production in the tri-border region surrounding Basel.



**21**

HAUPTBAU: ST. ALBAN-GRABEN 16, NEUBAU: ST. ALBAN-GRABEN 20,  
GEGENWART: ST. ALBAN-RHEINWEG 60, WWW.KUNSTMUSEUMBASEL.CH

## **KUNSTMUSEUM BASEL**

The Kunstmuseum Basel invites you on a journey through art history in its three houses: explore the globally renowned oldest public art collection with around 4,000 paintings, sculptures, installations and videos, as well as 300,000 drawings, watercolours and prints spanning seven centuries.

### **→ 8.2.2026 (Neubau)**

#### **Verso. Tales from the Other Side**

The exhibition reveals what is hidden on the backs of paintings, thus offering new perspectives on familiar works of art.

### **→ 8.3.2026 (Neubau)**

#### **Ghosts. Visualizing the Supernatural**

Ghosts are everywhere. These mysterious beings fascinate us and now haunt this extensive special exhibition at the Kunstmuseum Basel.

### **7.3.–2.8.2026 (Neubau)**

#### **The First Homosexuals. The Birth of New Identities, 1869–1939**

Discover the origins of queer identities with a groundbreaking exhibition on the birth of the term “homosexual”.

The exhibition explores the early emergence and visibility of same-sex desire and gender diversity in art. Featuring around 100 paintings, photographs, sculptures and works on paper, the show presents homosexual identities as a historical phenomenon.

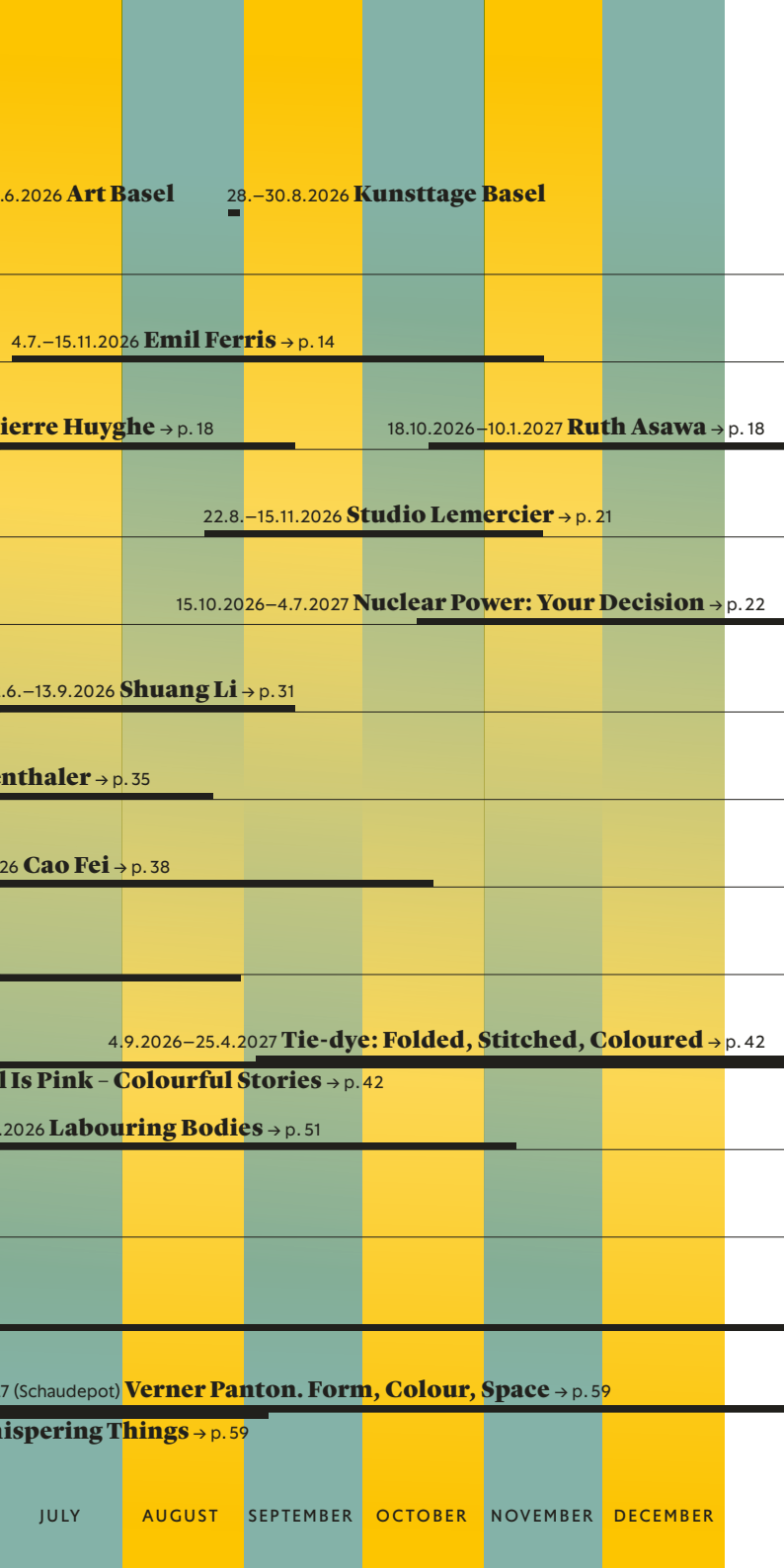
### **18.4.–23.8.2026 (Neubau)**

#### **Helen Frankenthaler**

Immerse yourself in the radiant colour worlds of Helen Frankenthaler (1928–2011) – a pioneer of modern abstract painting. Experience the full sweep and the bold creative force of her visionary practice in the most comprehensive solo exhibition of her work ever seen in Europe.

# HIGHLIGHTS

23.1.2026	Basel Museums Night	18.–21.
ANTIKENMUSEUM BASEL UND SAMMLUNG LUDWIG		
Until 29.3.2026	Hero Games. Discover the Legend Within You.	→ p. 7
CARTOONMUSEUM BASEL – ZENTRUM FÜR NARRATIVE KUNST		
FONDATION BEYELER		
24.5.–13.9.2026	P	
25.1.–25.5.2026	Cezanne	→ p. 17
HEK (HAUS DER ELEKTRONISCHEN KÜNSTE)		
HISTORISCHES MUSEUM BASEL – BARFÜSSERKIRCHE		
Until 28.6.2026	Treasure Hoards – Hidden, Lost, Found	→ p. 22
KUNSTHALLE BASEL		
12		
20.2.–17.5.2026	Dominique White	→ p. 31
KUNSTMUSEUM BASEL   NEUBAU		
18.4.–23.8.2026	Helen Franke	
Until 8.3.2026	Ghosts. Visualizing the Supernatural	→ p. 35
KUNSTMUSEUM BASEL   GEGENWART		
30.5.–18.10.20		
MUSEUM.BL		
Until 30.8.2026	Fix it! The joy of repairing	→ p. 41
MUSEUM DER KULTUREN BASEL		
24.4.2026–24.1.2027	Our Own	
MUSEUM TINGUELY		
10.6.–8.11.		
Until 10.5.2026	Carl Cheng. Nature Never Loses	→ p. 48
NATURHISTORISCHES MUSEUM BASEL		
Until 28.6.2026	Wildlife Photographer of the Year	→ p. 52
SPIELZEUG WELTEN MUSEUM BASEL		
28.2.2026–31.1.2027	Teddy	→ p. 56
VITRA DESIGN MUSEUM		
23.5.2026–9.5.202		
14.3.–6.9.2026 (Museum)	Hella Jongerius: Wh	
JANUARY	FEBRUARY	MARCH
APRIL	MAY	JUNE



**30.5.–18.10.2026 (Gegenwart)**

**Cao Fei**

Imagine a museum that becomes a living, breathing city. The first retrospective exhibition in Switzerland of Chinese artist Cao Fei (b. 1978) combines impressive installations and visionary video worlds to create an immersive “Gesamtkunstwerk”.

---

**22.8.2026–3.1.2027 (Neubau)**

**Roy Lichtenstein. Sweet Dreams, Baby!**

**Prints of the Pop-Art**

From iconic comic explosions to playful reworkings of classical art, the exhibition offers a vivid look at five decades of experimentation. Around 35 works invite visitors into Lichtenstein's (1923–1997) colourful, ironic and exuberant world.

---

**19.9.2026–7.2.2027 (Neubau)**

**Van Gogh, Hodler, and a Convertible:**

**The Collector Gertrud Dübi-Müller**

Encounter works by Paul Cezanne, Henri Matisse, Vincent van Gogh, Cuno Amiet, Alice Bailly, Giovanni Giacometti und Ferdinand Hodler in the first major exhibition devoted to Gertrud Dübi-Müller (1888–1980), one of Switzerland's most significant collectors of art.

---

**14.11.2026–29.3.2027 (Gegenwart)**

**Open Relationship. Contemporary Collection**

How can contemporary art help us understand our present-day reality? This is the basic question behind this Kunstmuseum Basel exhibition situated throughout its Gegenwart premises. The exhibition comprises artworks from the museum's own collection as well as from the Emanuel Hoffmann Foundation and Kunstkredit Basel-Stadt collections. The works selected deal with some of today's most urgent questions in a polyphonic, critical and sometimes playful manner.



**22**

MERIAN GÄRTEN, VORDER BRÜGLINGEN 5,  
4142 MÜNCHENSTEIN/BASEL, WWW.MERIANGÄRTEN.CH

**MÜHLEMUSEUM**

This 16th-century watermill in the heart of the Merian Gardens houses a small exhibition on the history of milling, from Bronze Age craft objects to industrial production.



**Kunstmuseum Basel |  
Neubau**

Helen Frankenthaler:  
radiant colour worlds

Helen Frankenthaler: *Sesame*,  
1970, © Helen Frankenthaler  
Foundation, Inc. / 2025,  
ProLitteris, Zurich

**Kunstmuseum Basel | Neubau**

Collector and pioneer Gertrud Dübi-Müller,  
portrayed by Ferdinand Hodler

Ferdinand Hodler: *Portrait of Gertrud Müller*, 1911,  
Kunstmuseum Solothurn, Dübi-Müller-Stiftung,  
photo: SIK-ISEA, Zurich (Philipp Hitz)





## MUKS – Museum Kultur & Spiel Riehen

Never fear!

© MUKS – Museum Kultur & Spiel Riehen,  
photo: Benno Hunziker

## Museum.BL

Can repairing make you happy?

*Fix it! About the joy of repairing,*  
Museum.BL, Liestal, © photo:  
Georgios Kefalas, Museum.BL, Liestal







**23** BASELSTRASSE 34, 4125 RIEHEN/BASEL  
WWW.MUKS.CH

## MUKS – MUSEUM KULTUR & SPIEL RIEHEN

MUKS is a hands-on museum. The three permanent exhibitions *Play*, *Village* and *Wettstein* as well as the regular special exhibitions invite visitors of all ages to interactively immerse themselves into the wonderful world of toys past and present, and to learn about Riehen's eventful history along the way.

→ **2.3.2026**

### **Shabbat, Schnitzel, Shared Rooms: Life in the Jewish Retirement Home La Charmille in Riehen**

*La Charmille* was more than a retirement home – it was a place of refuge, a community bound by fate and a centre of Jewish culture. The exhibition and accompanying publication illuminate a unique microcosm within global history, offering insights into daily life at the home and the resilience of its residents.

→ **12.4.2026**

### **Monster**

Monsters don't exist! And yet they linger everywhere. They populate books, films and legends. The exhibition leads visitors through a staged cellar landscape where they can find out how to face up to their own scary creatures, and even how to befriend them.



**24** ZEUGHAUSPLATZ 28, 4410 LIESTAL  
WWW.MUSEUM.BL.CH

## MUSEUM.BL

A lively museum for young and old alike, with nature and culture presented side by side. The innovative, fun-filled exhibitions make a visit an unforgettable day out for families and for school groups, too.

→ **30.8.2026**

### **Fix it! The joy of repairing**

Repairing makes you happy. Fact or fiction? Visitors to the exhibition can immerse themselves in the cultural history and philosophy of repair work and are given space to tinker, glue, wire, screw and sew. Because *Fix it!* is both an exhibition and a repair school.



**25** MÜNSTERPLATZ 20  
WWW.MKB.CH

# MUSEUM DER KULTUREN BASEL

One of Europe's pre-eminent ethnographic museums with a collection of global renown. Its permanent and temporary exhibitions highlight topical everyday subjects and the diversity of cultural dimensions. An inspiring place to see the world with different eyes.

---

→ **11.1.2026 Beautiful and spiritual –  
Things for faith and meditation**

On display are things that help people to immerse themselves in the spiritual realm in everyday life.

---

→ **25.1.2026 Creators – People and their works**

The exhibition explores the creativity and life histories of the people who made the many different objects held by the museum.

---

→ **26.4.2026 The path to the beyond**

How do different societies imagine the transition from this world to the beyond, how do they shape it, and what path does a soul or a deceased person set out on? Representations from art and popular culture as well as views from current neurological research complement the panopticon.

---

**24.4.2026–24.1.2027 Our Owl Is Pink – Colourful Stories**

Colours make the world look bright. But do we all perceive and experience them in the same way? In a flight over the museum's collection, our pink owl spotted a range of colourful objects and tells their stories. Hands-on stations and a large studio invite viewers to discover colours with all their senses.

---

**4.9.2026–25.4.2027 Tie-dye: Folded, Stitched, Coloured**

In Japanese, *shiboru* means to compress or wring, and describes how unique patterns are created by folding, tying and sewing. *Plangi*, *bandhani*, *tritik* and *adire* are other terms used for this technique, also known as tie-dye. On show are examples from Asia, Europe, Africa and South America.

---

**19.11.2026–10.1.2027 GOLD – Its Bright and Dark Sides**

Gold brings a glitter to Christmas trees and precious items. But where there's light, there's also shade. The mining of this precious metal leaves deep scars across the entire world. Pieces of gold from the museum's collections are juxtaposed with the voices of those affected by gold mining, offering a new perspective on this special colour.

**Museum der  
Kulturen Basel**

Discovering colours  
with all one's senses

Vessel flute in the shape  
of an owl made of clay,  
before 1973, Mexico,  
© Omar Lemke Photographer,  
Museum der Kulturen Basel



**Museum der Kulturen Basel**

Tie-dye technique

Men's boubou robe made using the *plangi*  
binding technique, circa 1973/1974,  
Soninke, Sierra Leone, © photo: Omar Lemke  
Photographer, Museum der Kulturen Basel



#### ↓ Repairing till the feeling is there

“Repairing is a lifetime art, a practice that has got somewhat forgotten. That’s a pity, because it hones skills that we will urgently require in the future. Repairing involves technical know-how, knowledge of materials and inventiveness, but also perseverance and social exchange, and leads to an attitude of respect, not just towards objects. The exhibition *Fix it! Vom Glück des Reparierens* invites visitors to try their hand at fixing something themselves. Never mind if it doesn’t work after a first effort – people who repair things tend to have a can-do attitude. It’ll work out, even if it takes five or more attempts.”

Pit Schmid, head exhibitions & education and curator of the exhibition  
*Fix it! Vom Glück des Reparierens*

24 | Museum.BL, Liestal → P. 41

#### Curators' stories

# NEWLY PRESENTED





**↑ Curating the museum park – a novelty**

“The position of the botanical curator offers a unique opportunity to deepen the dialogue between art and nature at the Fondation Beyeler, extending the curatorial work beyond the gallery walls. Plants are vital to our human culture – they sustain us, shape our histories, and remind us of our bond with the living world. Working with artists, scientists and gardeners, I will focus on caring for the museum’s park, guiding its conservation and development, while creating engaging programs that connect the art world with the ecological realms.”

Rahel Kesselring, CHANEL botanical curator

**10 | Fondation Beyeler, Riehen/Basel → p. 17**



### **Museum für Musikautomaten**

Self-playing pianos

© photo: Museum für  
Musikautomaten, Seewen SO

### **Museum Kleines Klingental**

Selling the coveted “Rosekiechli”  
at Basel’s autumn fair

Woman with a plate of “Rosekiechli” at the  
Basel Autumn Fair, 1950s, photo:  
Foto Jeck Basel, StABS, BSL 1060c 3/8/377







**26** BOLLHÜBEL 1, 4206 SEEWEN SO  
WWW.MUSIKAUTOMATEN.CH

## MUSEUM FÜR MUSIKAUTOMATEN

We invite you to discover the fascinating world of music automata. On a one-hour tour, you can listen to a wide array of mechanical music and learn about the astonishing technology powering these machines. From extravagant music boxes to sophisticated orchestrions, the Museum of Music Automata brings the history of automated music to life.

→ **10.5.2026**

### **Magic Piano. The golden age of piano playing and its self-playing marvels – rediscovered**

This special exhibition at the Museum of Music Automata is a celebration of self-playing pianos – and of the museum's two-decade research collaboration with the Bern Academy of the Arts (HKB).



**27** UNTERER RHEINWEG 26  
WWW.MKK.CH

## MUSEUM KLEINES KLINGENTAL

This former Dominican convent houses an exhibition on the convent's own history, a model of the city of Basel and some of the original Romanesque and Gothic sculptures from Basel Cathedral. In addition, regular special exhibitions highlight aspects of the art and cultural history of the whole region.

→ **15.3.2026**

### **Attention to detail – Plaster casts of Basel Minster**

Up close! The exhibition, created in collaboration with the Basler Münsterbauhütte foundation, shows plaster casts of beautifully, strangely or bizarrely designed components of the cathedral, allowing a direct view of parts that are inaccessible or remote.

**23.5.2026–21.3.2027**

### **Basel on a plate – culinary city history**

The culinary journey through Basel begins with a look at the popular *Basler Kochschule* from 1877 and continues through the city's culinary diversity – served in thematic bites from the past and present.



With his kinetic works of art, Swiss artist Jean Tinguely (1925–1991) was one of the important pioneers of art after 1950. The world's largest collection of his works is held at Museum Tinguely, which is housed in a building designed by Mario Botta on the banks of the Rhine. Regular special exhibitions showcase a broad range of artists and themes with a connection to Tinguely's ideas.

---

→ **1.3.2026**

**Oliver Ressler. Scenes from the  
Invention of Democracy**

In his 2009 video installation, Oliver Ressler (b. 1970) focused on the question “What is democracy?”. His latest work, presented here for the first time, is also about political participation, this time against a background of climate change and the political shift to the right in Europe. It spotlights protests against the planned extension of a road for testing cars in Puglia (Italy), which threatens a forest in a region plagued by drought.

---

→ **10.5.2026**

**Carl Cheng. Nature Never Loses**

*Carl Cheng. Nature Never Loses* surveys six decades of the prescient, genre-defying practice of artist Carl Cheng (b. 1942), whose ever-evolving body of work engages with environmental change, the relevance of art institutions to their publics and the role of technology in society.

---

**5.3.2026–30.8.2027**

**(Museum Tinguely, former telephone box)**

**Nicolas Darrot. Fuzzy Logic**

Fuzzy logic, a type of artificial intelligence that allows computers to deal with “fuzzy” concepts, mimics human reasoning. It doesn't just use the strictly binary 1 (yes, true) or 0 (no, false), but works with gradations to describe states like warm or cool linguistically rather than strictly mathematically. The *Fuzzy Logic* characters created by Nicolas Darrot (b. 1972) are full of insecurities and mood swings; their dancing is spontaneous, their acting complex, their talent imperfect. The exhibition is made up of five separate presentations.



## Museum Tinguely

### Climate-related protests in Madrid 2019

Oliver Ressler: *Not Sinking, Swarming*, 4K-Video, 2021, courtesy of the artist, àngels barcelona, © 2025, ProLitteris, Zurich



## Museum Tinguely

### Three-dimensional sand imprint of a miniature town

Carl Cheng: Documentation of *Santa Monica Art Tool* and its installation *Walk on LA*, Santa Monica State Beach, 1988, courtesy of the artist

## Museum Tinguely

### Imperfect – Nicolas Darrot's *Fuzzy Logic* figures

Nicolas Darrot: *Yuki Otoko*, 2025, courtesy of the artist and Galerie C, photo: Nicolas Darrot



## Museum Tinguely

### Alternative forms of connecting

Angelica Mesiti: *The Rites of When* (video still), 2024, © 2025, ProLitteris, Zürich, copyright by the artist



## Museum Tinguely

### Discovering Swiss artist Zilla Leutenegger

Zilla Leutenegger: *Think twice*, 2025, installation, courtesy of the artist and Galerie Peter Kilchmann, Zurich, Paris, photo: Sebastian Schaub

### **18.3.–30.8.2026 Angelica Mesiti. Reverb**

In her creations, Angelica Mesiti explores alternative forms of communication. Her video installations evoke the poetry of the everyday and show how exchanges via sound and gesture can create community. *The Rites of When* (2024) rethinks age-old seasonal rituals; the work offers a sensuous exploration of ways to connect with others in times of ecological uncertainty and societal change.

---

### **10.6.–8.11.2026 Labouring Bodies**

*Labouring Bodies* explores the manifold interdependence between body and technology from a feminist perspective. The group exhibition shows how the human body – especially the feminised and marginalised human body – has since the dawn of the modern age been impacted and controlled by machines, while also being understood as a site of resistance. Artists cast light on working with machines, on the technologisation of production and reproduction, and on women's contribution to technological progress, inviting visitors to rethink their notions of body, labour and care.

---

### **23.9.2026–7.3.2027 Zilla Leutenegger.**

#### **ZWISCH ENRAUM/HINDU RCHZUSCHAUN**

A glimpse through the door gap, a noise under the stairs, a shadow in the rafters: it's as if someone has moved into the museum. The multimedia installations by Zilla Leutenegger (b. 1968) represent fragments of inhabited architecture and sketches of a life. They not only tell short, poetic stories, but also invite visitors to rediscover the museum and see it with different eyes.

---

### **2.12.2026–9.5.2027 Les témoins oculistes.**

#### **The sense of sight in art**

The group exhibition presents artworks in various media from the Baroque to the present day that offer a range of surprising visual experiences. The artists involved explore the principles of visual perception – light, darkness, colour, movement and space. By including disturbances and illusions in their works, such as distortion, inversion or mirroring, they both question and sharpen our everyday view of reality.



**29** AUGUSTINERGASSE 2  
WWW.NMBS.CH

## NATURHISTORISCHES MUSEUM BASEL

Dinosaurs, minke whales, sabre-toothed felines, quaggas, dodos, butterflies and squids are among the highlights of the eleven million and more objects in this extraordinary archive of the natural world. The subjects covered range from the Earth's origins to the evolution of mammals.

---

→ **28.6.2026**

### **Wildlife Photographer of the Year**

An impressive presentation – exclusively in Switzerland – of the 100 best nature photographs worldwide, featuring powerful and fascinating images of hidden animal behaviours, spectacular species and breathtaking landscapes.

---

**17.4.–28.6.2026**

### **Fotowettbewerb Schnappschuss**

*Schnappschuss* (snapshot) presents the 30 best pictures from the amateur photo competition as well as the pictures that won the audience and biodiversity prize.

---

**20.11.2026–2.5.2027**

### **Wildlife Photographer of the Year**

The 62nd edition of the world-renowned exhibition with exceptional photographic images of nature.



**30** ST. JOHANNIS-HAFEN-WEG 5  
WWW.CAMPUS.NOVARTIS.COM/NOVARTIS-PAVILLON

## NOVARTIS PAVILLON

The Novartis Pavillon is a publicly accessible exhibition, meeting and event centre on the Novartis Campus in Basel. It fosters dialogue on science and the future of healthcare. In the permanent, interactive exhibition *Wonders of Medicine*, visitors learn how medicines are developed, how diseases affect the body and what ethical questions shape the development of medicine.





### **Naturhistorisches Museum Basel**

Impressive underwater world

© Ralph Pace, Wildlife Photographer of the Year

### **Novartis Pavillon**

An exhibition venue in Basel that deals with relevant questions regarding the healthcare system

© Novartis





### **Pharmaziemuseum der Universität Basel**

Delving into the past of pharmaceuticals

Photography of the old exhibition, 1930–1940,

Pharmaziemuseum der Universität Basel,

© Pharmaziemuseum der Universität Basel

### **S AM Schweizerisches Architekturmuseum**

Housing cooperatives as  
a laboratory for coexistence

Erlenmatt Ost, © Barbara Bühler





**31** TOTENGÄSSLEIN 3  
WWW.PHARMAZIEMUSEUM.CH

## PHARMAZIEMUSEUM DER UNIVERSITÄT BASEL

One of Europe's largest and most important collections on the history of pharmacy, with historical medicines, laboratory apparatus and pharmacist's ceramics from the 15th to the 19th century. The museum is housed in *Zum Vorderen Sessel*, a building of historical significance where Erasmus of Rotterdam and Paracelsus were frequent guests.

### → 1.2.2026 **Celebrating 100 years of the University of Basel Pharmacy Museum**

100 years ago, pharmacist Josef Anton Häfliger (1873–1954) began collecting historical pharmaceutical artefacts. The special anniversary exhibition follows the traces of the collection back to these origins, introducing central motifs, persons and provenances on the basis of selected objects from the founding period up to the present day.



**32** STEINENBERG 7  
WWW.SAM-BASEL.ORG

## S AM SCHWEIZERISCHES ARCHITEKTURMUSEUM

This is a place for reflecting on, debating and investigating architecture. s AM is the leading institution for conveying architecture and building culture in Switzerland to the public. With its temporary exhibitions and events, the museum examines the influence of architecture and urban development on our daily lives.

### → 19.4.2026 **Wohnen fürs Wohnen: Swiss housing cooperatives as a laboratory for coexistence**

The exhibition presents regional and national cooperative housing projects as laboratories of non-profit-oriented forms of communal living from which the entire city can benefit. A cooperation between s AM and the Association of Housing Cooperatives Northwestern Switzerland.

### 9.5.–11.10.2026 **Groundwork**

This exhibition explores the work of architects seeking alternative modes of engagement with project sites and their complex ecosystems. Documentary films show how ideas take shape before they are turned into buildings. A production of the Canadian Centre for Architecture (CCA), Montreal.



**33** HÖRNLIALLEE 70, 4125 RIEHEN/BASEL  
WWW.SAMMLUNGHOERNLI.CH

## **SAMMLUNG FRIEDHOF HÖRNLI**

A unique collection and permanent exhibition of objects relating to burial culture and the history of cremation. From grave-digging tools to urns from all over the world.



**34** RUCHFELDSTRASSE 19, 4142 MÜNCHENSTEIN/BASEL  
WWW.SCHAULAGER.ORG

## **SCHAULAGER**

The Schaulager houses the collection of the Emanuel Hoffmann Foundation and is dedicated to the preservation, study and presentation of modern and contemporary art. It is primarily geared towards professionals and students, but occasionally hosts exhibitions and events that are open to the general public.



**35** STEINENVORSTADT 1  
WWW.SWMB.MUSEUM

## **SPIELZEUG WELTEN MUSEUM BASEL**

Unique in Europe: an enchanting array of dolls, dolls' houses, toy grocery shops and carousels, as well as the world's largest collection of teddy bears with over 6,000 specimens.

### → **8.2.2026 Christmas Angels with flapping wings and ringing bells**

Angels, as winged messengers from heaven, are central to the Christmas story. Whether in the form of chubby cherubs or graceful youths, angels appear on Christmas trees and in picture books just as often as they do as candleholders or figures in nativity scenes.

### **28.2.2026–31.1.2027 Teddy**

Who doesn't know Steiff, Winnie-the-Pooh or the Haribo bears? The teddy bear is a symbol of childhood, reassurance and timeless friendship. For over a century, it has accompanied us through the highs and lows of life – as a cuddly toy, as a valuable collector's item or as an icon of pop culture.

### **7.11.2026–31.1.2027 Christmas exhibition**

An atmospheric Christmas exhibition with festive window displays and an opulent Christmas shop.



### **Spielzeug Welten Museum Basel**

As Christmas tree decoration or in Christmas storybooks – angels are everywhere

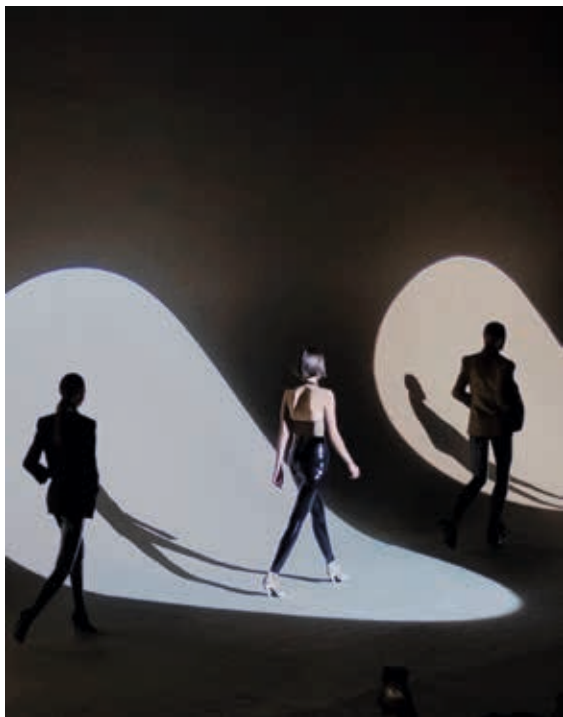
Angel, Neapolitan nativity scene,  
© photo: Matthias Willi,  
Spielzeug Welten Museum Basel

### **Spielzeug Welten Museum Basel**

Teddy bears – cuddly toys,  
collectors' items and icons of pop culture

*Teddy Doofings*, ca. 1937, manufacturer: Merrythought,  
England, © photo: Christoph Markwalder





## Vitra Design Museum

### The art of fashion shows

Key Visual Catwalk: *The Art of the Fashion Show*, © Vitra Design Museum, graphic design: Haller Brun based on: © Bureau Betak, photo: Marie Laure Dutel

## Vitra Design Museum

### Form, colour, space

Verner Panton: Fantasy Landscape at the exhibition *Visiona 2*, Cologne, Germany, 1970, © Verner Panton Design AG, Basel



**36**CHARLES-EAMES-STRASSE 2, 79576 WEIL AM RHEIN DE  
WWW.DESIGN-MUSEUM.DE

# VITRA DESIGN MUSEUM

The Vitra Design Museum numbers among the world's leading museums of design. It is dedicated to the research and presentation of design, past and present, and examines design's relationship to architecture, art and everyday culture.

---

## → 15.2.2026 (Museum)

### **Catwalk: The Art of the Fashion Show**

Fashion shows are major mediated spectacles, society events and social statements. The exhibition spotlights the history and cultural significance of fashion shows from the late 19th century to today's livestream experiences and presents iconic examples by internationally renowned fashion houses.

---

## 14.3.– 6.9.2026 (Museum)

### **Hella Jongerius: Whispering Things**

Hella Jongerius (b. 1963) is among the most influential designers of the past decades. Since the start of her career in the 1990s, she has created groundbreaking works in many different disciplines, including textiles, ceramics, furniture, lighting and sculpture. The exhibition is the first retrospective of the Dutch designer's overall oeuvre, including her famed collaborations with Maharam, KLM, Camper and Vitra.

---

## 23.5.2026–9.5.2027 (Schaudepot)

### **Verner Panton. Form, Colour, Space**

Danish architect Verner Panton (1926–1998) will be remembered as one of the 20th century's most influential furniture and interior designers. His creative output ranges from furniture and lamps to sculptures and interiors that radically redefined the scope of colour and light as design elements. In 2026, Panton would have turned 100. To celebrate the centenary of his birth, the Schaudepot is presenting his work in a chronologically and thematically designed exhibition.

---

## 26.9.2026–28.2.2027 (Museum)

### **Geoffrey Bawa. Architecture for the Senses**

This is the first major retrospective exhibition on the work of Geoffrey Bawa (1919–2003), one of the most influential 20th century architects in Asia. Geoffrey Bawa defined architecture in postcolonial Sri Lanka. His résumé includes hotels, houses, schools and universities, factories, numerous public buildings and the new parliament building. Today, at a time of growing social inequality and environmental crisis, his work continues to inspire architects and designers across the globe.



**Discovery trip behind the museum doors →**

For youngsters aged between 11 and 16 who are interested in natural history, the KITZ Club is just the thing.

Children and adolescents are invited to talk to experts and to help with events. They can also introduce visitors to the museum and receive exclusive insights behind the scenes. The KITZ Club meets once a month on a Saturday afternoon. It begins at the end of August and lasts until June of the following year. Registration is required, participation is free of charge.

**29 | Naturhistorisches Museum Basel → P. 52**  
**Augustinergasse 2, +41 61 266 55 00**  
**[www.nmbs.ch](http://www.nmbs.ch)**



© Naturhistorisches Museum Basel

Children and adolescents

# CREATIVE COSMOS





#### ← Being creative in a studio

Fondation Beyeler's *Open Studio* is a special studio format in which visitors of all ages (children up to 12 must be accompanied by an adult) can experience art in an accessible manner and become creative themselves. In an open, free-of-charge studio session participants can, inspired by the current exhibitions, try out various materials and techniques and implement their own ideas without any prior knowledge. The *Open Studio* sessions are held at weekends and usually last several hours. No registration is required.



**10 | Fondation Beyeler → P. 17**  
**Baselstrasse 101, Riehen/Basel, +41 61 645 97 00**  
**[www.fondationbeyeler.ch](http://www.fondationbeyeler.ch)**

Photo: Fondation Beyeler, Riehen/Basel



#### ↑ Unlocking the secrets of art

At the Museum Tinguely children's club, children from age 8 upwards can explore the secrets of art. Every Wednesday afternoon between 2 and 5 p.m., a different work of art is spotlighted. Afterwards, the children are provided with a wide range of materials allowing them to create, build, design and experiment. They are given space and freedom to develop their own creative solutions. Participation costs CHF 5, registration is required. The children are invited to bring along a snack.



**28 | Museum Tinguely → P. 48**  
**Paul Sacher-Anlage 1, +41 61 681 93 20**  
**[www.tinguely.ch](http://www.tinguely.ch)**

2025 Museum Tinguely, Basel, Matthias Willi

↓ **Create your own comics**

In connection with each exhibition at Cartoonmuseum, there is a *Cartoonsonntag*, multiple Sunday afternoons from 2 to 4 p.m. where children and young adults can explore the exhibition and also try their own hand at creating comics. Anyone from age 7 upwards is welcome. A snack is offered mid-afternoon to provide added energy for the creative work. Registration is required, the costs are CHF 14 per child (discounts are granted for family pass holders).



**7 | Cartoonmuseum Basel – Zentrum für narrative Kunst → p. 14**  
**St. Alban-Vorstadt 28, +41 61 226 33 60**  
**[www.cartoonmuseum.ch](http://www.cartoonmuseum.ch)**

© Workshops at Cartoonmuseum Basel, 2024, photo: Derek Li Wan Po



#### **Digital stories behind ancient ruins →**

On an interactive tour, children and adolescents can immerse themselves in the everyday life of the Romans and experience the dramatic final hours of commercial houses before fire strikes 1700 years ago. The tour comes with an augmented reality audio play on visitors' own smartphone or tablet. A free ticket is required to access the commercial buildings (via museum ticket desk or ticket shop).

**4 | Augusta Raurica → P. 8**  
**Giebenacherstrasse 17, Augst, +41 61 552 22 22**  
**[www.augustaurica.ch](http://www.augustaurica.ch)**



© Augusta Raurica, Augst







#### ← Shaping digital worlds

Glimpsing into the inner workings of a computer, programming games, inventing 3D creatures or experimenting with robotics – *BitFabrik* lets children between 9 and 14 try their own hand at digital design. It is held on one Saturday each month, with a new topic on offer each time. Registration is required, the costs are CHF 25 per workshop (discounts are possible).



**12 | HEK (Haus der Elektronischen Künste) → P. 21**  
**Freilager-Platz 9, Münchenstein/Basel, +41 61 283 60 50**  
**[www.hek.ch](http://www.hek.ch)**

© HEK (Haus der Elektronischen Künste), Münchenstein/Basel

# ESSENTIALS

## 1 ANATOMISCHES MUSEUM DER UNIVERSITÄT BASEL



[www.anatomie.unibas.ch/museum](http://www.anatomie.unibas.ch/museum) **ADDRESS:** Pestalozzistrasse 20, +41 61 207 35 35  
**DIRECTIONS:** tram 11 → St. Johannis-Tor; bus 30/33 → Kinderspital ukbb;  
bus 31/36/38 → Metzgerstrasse **OPENING HOURS:** Mon–Fri 2–5 p.m.  
**TICKETS:** CHF 10/7 (incl. Pharmaziemuseum der Universität Basel), MUSEUMS-PASS-MUSÉES:  
free admission, CH-MUSEUMSPASS: free admission, BASELCARD: 50 % reduction

## 2 ANTIKENMUSEUM BASEL UND SAMMLUNG LUDWIG — BISTRO/RESTAURANT, SHOP



[www.antikenmuseumbasel.ch](http://www.antikenmuseumbasel.ch) **ADDRESS:** St. Alban-Graben 5, +41 61 267 01 12  
**DIRECTIONS:** tram 1/2/15 → Kunstmuseum **OPENING HOURS:** Tue/Wed 11 a.m.–5 p.m.,  
Thu/Fri 11 a.m.–10 p.m., Sat/Sun 10 a.m.–16 p.m. **TICKETS:** CHF 12/5, not incl.  
temporary exhibitions, free admission under 13, permanent collection: Thu/Fri from  
5 p.m. and Sat/Sun all day; free admission, MUSEUMS-PASS-MUSÉES: free admission,  
CH-MUSEUMSPASS: free admission

## 3 ANTIKENMUSEUM BASEL UND SAMMLUNG LUDWIG, SKULPTURHALLE — CAFÉ



[www.antikenmuseumbasel.ch](http://www.antikenmuseumbasel.ch) **ADDRESS:** Mittlere Strasse 17, +41 61 260 25 00  
**DIRECTIONS:** tram 3 → Spalentor; bus 30/33 → Bernoullianum **OPENING HOURS:**  
Mon 12–5 p.m., Wed 10 a.m.–2 p.m., Sun 11 a.m.–5 p.m. **TICKETS:** free admission

## 4 AUGUSTA RAURICA — RESTAURANT: LUCI THEATERBUVETTE: APRIL–OCTOBER



[www.augustaurica.ch](http://www.augustaurica.ch) **ADDRESS:** Giebenacherstrasse 17, Augst, +41 61 552 22 22  
**DIRECTIONS:** train S1 from Basel sbv → Kaiseraugst; bus 81 from Aeschenplatz or Liestal →  
Augst, Stundeglas; Bus 72 from Augst, Stundeglas → Augst, Langgass **OPENING HOURS:**  
Museum and Roman House, monuments, wildlife park Mar–Oct: daily 10 a.m.–5 p.m.,  
Nov–Feb: Tue–Sun 10 a.m.–3 p.m. **TICKETS:** CHF 8/6, MUSEUMS-PASS-MUSÉES: free  
admission, CH-MUSEUMSPASS: free admission \*Wheelchair-accessible (museum and  
Roman house; monuments limited access only)

## 5 AUSSTELLUNGSRAUM KLINGENTAL



[www.ausstellungsraum.ch](http://www.ausstellungsraum.ch) **ADDRESS:** Kasernenstrasse 23, +41 61 681 66 98  
**DIRECTIONS:** tram 6/8/14/15/17, bus 31/34/38 → Rheingasse; tram 8/17 → Kaserne  
**OPENING HOURS:** Wed–Fri 3–6 p.m., Sat/Sun 1–6 p.m. **TICKETS:** free admission

## 6 BASLER PAPIERMÜHLE — BISTRO/RESTAURANT, SHOP



[www.baslerpapiermuehle.ch](http://www.baslerpapiermuehle.ch) **ADDRESS:** St. Alban-Tal 37, +41 61 225 90 90  
**DIRECTIONS:** tram 1/2/15 → Kunstmuseum; tram 3 → St. Alban-Tor  
**OPENING HOURS:** Tue–Fri/Sun 11 a.m.–5 p.m., Sat 1–5 p.m. **TICKETS:** CHF 20/17/11,  
families CHF 56/38, MUSEUMS-PASS-MUSÉES: free admission, CH-MUSEUMSPASS: free admission

## 7 CARTOONMUSEUM BASEL – ZENTRUM FÜR NARRATIVE KUNST — SHOP, LIBRARY



[www.cartoonmuseum.ch](http://www.cartoonmuseum.ch) **ADDRESS:** St. Alban-Vorstadt 28, +41 61 226 33 60  
**DIRECTIONS:** tram 1/2/15 → Kunstmuseum **OPENING HOURS:** Tue–Sun 11 a.m.–5 p.m.  
**TICKETS:** CHF 14/7, free admission under 10, MUSEUMS-PASS-MUSÉES: free admission,  
CH-MUSEUMSPASS: free admission

## 8 DREILÄNDERMUSEUM — CAFÉ, SHOP



[www.dreilaendermuseum.eu](http://www.dreilaendermuseum.eu) **ADDRESS:** Basler Strasse 143, Lörrach DE, +49 7621 41 51 50  
**DIRECTIONS:** train S6 from Basel sbv or Basel Bad. Bahnhof → Lörrach Museum/Burghof;  
bus 6/16/Ü3 from Riehen Grenze → Museum/Burghof **OPENING HOURS:**  
Tue–Sun 11 a.m.–6 p.m. **TICKETS:** EUR 3/1, MUSEUMS-PASS-MUSÉES: free admission

## 9 FEUERWEHRMUSEUM BASEL

[www.bs.ch/jsd/rettung/unsere-organisation/feuerwehr/feuerwehrmuseum](http://www.bs.ch/jsd/rettung/unsere-organisation/feuerwehr/feuerwehrmuseum)  
**ADDRESS:** Spalenvorstadt 11, +41 61 268 14 00 **DIRECTIONS:** tram 3, bus 34 → Universität;  
bus 30/33 → Spalentor **OPENING HOURS:** Sun 2–5 p.m. **TICKETS:** free admission

## 10 FONDATION BEYELER — CAFÉ, BISTRO/RESTAURANT, SHOP



[www.fondationbeyeler.ch](http://www.fondationbeyeler.ch) **ADDRESS:** Baselstrasse 101, Riehen/Basel, +41 61 645 97 00  
**DIRECTIONS:** tram 6 → Fondation Beyeler; train S6 from Basel sbv or Basel Bad. Bahnhof →  
Riehen; by car → car park Zentrum **OPENING HOURS:** daily 10 a.m.–6 p.m.,  
Wed 10 a.m.–8 p.m. **TICKETS:** CHF 25/20, free admission under 26,  
MUSEUMS-PASS-MUSÉES: free admission



- 11 HAFENMUSEUM – VERKEHRSDREHSCHIBE SCHWEIZ** **SHOP** &  
[www.hafenmuseum.ch](http://www.hafenmuseum.ch) **ADDRESS:** Westquaistrasse 2, +41 61 631 42 65  
**DIRECTIONS:** tram 8, bus 36 → Kleinhüningen **OPENING HOURS:** Tue–Sun 10 a.m.–5 p.m.,  
 29.6.–9.8.2026: Fri–Sun 10 a.m.–5 p.m. **TICKETS:** CHF 14/9, MUSEUMS-PASS-MUSÉES:  
 free admission, CH-MUSEUMSPASS: free admission, RAIFFEISEN MEMBERPLUS: free admission
- 12 HEK (HAUS DER ELEKTRONISCHEN KÜNSTE)** **CAFÉ, BISTRO, SHOP** &  
[www.hek.ch](http://www.hek.ch) **ADDRESS:** Freilager-Platz 9, Münchenstein/Basel, +41 61 283 60 50  
**DIRECTIONS:** tram 11 → Freilager **OPENING HOURS:** Wed/Fri 12–6 p.m.,  
 Thu 12–8 p.m., Sat/Sun 12–5 p.m. **TICKETS:** CHF 12/8, free admission under 17,  
 museum membership *Friends of HEK*: free admission, MUSEUMS-PASS-MUSÉES: free  
 admission, CH-MUSEUMSPASS: free admission
- 13 HISTORISCHES MUSEUM BASEL – BARFÜSSERKIRCHE** **SHOP** &  
[www.barfuesserkirche.ch](http://www.barfuesserkirche.ch) **ADDRESS:** Barfüsserplatz 7, +41 61 205 86 00  
**DIRECTIONS:** tram 3/6/8/11/14/15/16/17 → Barfüsserplatz; tram 6/10/16/17 → Theater  
**OPENING HOURS:** Tue–Sun 10 a.m.–5 p.m. **TICKETS:** CHF 18/12, tickets are valid for all  
 premises of Historisches Museum Basel for 7 days, free admission under 13,  
 last opening hour and each 1st Sun of the month (permanent exhibitions only):  
 free admission, MUSEUMS-PASS-MUSÉES: free admission, CH-MUSEUMSPASS: free admission
- 14 HISTORISCHES MUSEUM BASEL – HAUS ZUM KIRSCHGARTEN** **SHOP**  
[www.hauszumkirschgarten.ch](http://www.hauszumkirschgarten.ch) **ADDRESS:** Elisabethenstrasse 27, +41 61 205 86 00  
**DIRECTIONS:** tram 1/2 → Kirschgarten **OPENING HOURS:** Wed–Sun 11 a.m.–5 p.m.  
**TICKETS:** CHF 18/12, tickets are valid for all premises of Historisches Museum Basel  
 for 7 days, free admission under 13, last opening hour and each 1st Sun of the month  
 (permanent exhibitions only): free admission, MUSEUMS-PASS-MUSÉES: free admission,  
 CH-MUSEUMSPASS: free admission
- 15 HISTORISCHES MUSEUM BASEL – MUSIKMUSEUM** **SHOP** &  
[www.musikmuseum.ch](http://www.musikmuseum.ch) **ADDRESS:** Im Lohnhof 9, +41 61 205 86 00  
**DIRECTIONS:** tram 3 → Musik-Akademie **OPENING HOURS:** Wed–Sun 11 a.m.–5 p.m.  
**TICKETS:** CHF 18/12, tickets are valid for all premises of Historisches Museum Basel for  
 7 days, free admission under 13, last opening hour and each 1st Sun of the month  
 (permanent exhibitions only): free admission, MUSEUMS-PASS-MUSÉES: free admission,  
 CH-MUSEUMSPASS: free admission
- 16 JÜDISCHES MUSEUM DER SCHWEIZ** **SHOP** &  
[www.juedisches-museum.ch](http://www.juedisches-museum.ch) **ADDRESS:** Vesalgasse 5, +41 61 261 95 14  
**DIRECTIONS:** tram 3, bus 30/34 → Universität **OPENING HOURS:** Daily 11 a.m.–5 p.m.  
**TICKETS:** CHF 15/10, free admission under 27, MUSEUMS-PASS-MUSÉES: free admission,  
 CH-MUSEUMSPASS: free admission, RAIFFEISEN MEMBER-PLUS, VMS/AMS, ICOM, COLOURKEY,  
 VIZAM MUSEUMCARD, TIM-TANDEM AT THE MUSEUM: free admission
- 17 KULTURSTIFTUNG BASEL H. GEIGER | KBH.G** **SHOP** &  
[www.kbhg.ch](http://www.kbhg.ch) **ADDRESS:** Spitalstrasse 18, +41 61 262 01 66 **DIRECTIONS:** tram 11,  
 bus 33/36 → Universitätsspital; bus 30/33/36 → Kinderspital ukbb  
**OPENING HOURS:** Mon/Wed–Sun 11 a.m.–6 p.m. **TICKETS:** free admission
- 18 KUNST RAUM RIEHEN** **SHOP** &  
[www.kunstraumriehen.ch](http://www.kunstraumriehen.ch) **ADDRESS:** Im Berowergut, Baselstrasse 71, Riehen/Basel,  
 +41 61 641 20 29 **DIRECTIONS:** tram 6 → Fondation Beyeler; train S6 from Basel SBB or  
 Basel Bad. Bahnhof → Riehen; by car → car park Zentrum **OPENING HOURS:**  
 Wed–Fri 1–6 p.m., Sat/Sun 11 a.m.–6 p.m. **TICKETS:** free admission
- 19 KUNSTHALLE BASEL** **CAFÉ, BISTRO/RESTAURANT, SHOP** &  
[www.kunsthallebasel.ch](http://www.kunsthallebasel.ch) **ADDRESS:** Steinenberg 7, +41 61 206 99 00  
**DIRECTIONS:** tram 1/2/3/8/10/11/14/15 → Bankverein; tram 6/10/16/17 → Theater  
**OPENING HOURS:** Tue/Wed/Fri 11 a.m.–6 p.m., Thu 11 a.m.–8.30 p.m., Sat/Sun 11 a.m.–5 p.m.  
**TICKETS:** CHF 12/8 (incl. s AM Schweizerisches Architekturmuseum), free admission  
 under 19, MUSEUMS-PASS-MUSÉES: free admission
- 20 KUNSTHAUS BASELLAND** **CAFÉ, SHOP** &  
[www.kunsthautbaselland.ch](http://www.kunsthautbaselland.ch) **ADDRESS:** Helsinki-Strasse 5, Münchenstein/Basel,  
 +41 61 563 15 10 **DIRECTIONS:** tram 11 → Freilager; tram 10, bus 36/37/47 →  
 Dreispitz **OPENING HOURS:** Tue–Fri 11 a.m.–6 p.m., Thu 11 a.m.–8 p.m.,  
 Sat/Sun 11 a.m.–5 p.m. **TICKETS:** CHF 12/9, free admission under 19, KULTURLEGI:  
 free admission, MUSEUMS-PASS-MUSÉES: free admission, CH-MUSEUMSPASS: free admission

**21 KUNSTMUSEUM BASEL** **BISTRO/RESTAURANT,\* SHOP &**

www.kunstmuseumbasel.ch **ADDRESS:** Hauptbau: St. Alban–Graben 16, Neubau: St. Alban–Graben 20, Gegenwart: St. Alban–Rheinweg 60, +41 61 206 62 62  
**DIRECTIONS:** tram 1/2/15 → Kunstmuseum; tram 1/2/3/8/10/11/14/15 → Bankverein  
**OPENING HOURS:** Tue/Thu–Sun 10 a.m.–6 p.m., Wed 10 a.m.–8 p.m.; Gegenwart: Tue–Sun 11 a.m.–6 p.m. **TICKETS:** see www.kunstmuseumbasel.ch, free admission under 12, MUSEUMS-PASS-MUSÉES: free admission, CH-MUSEUMSPASS: free admission

**22 MÜHLEMUSEUM**

www.meriangärten.ch **ADDRESS:** Merian Gärten, Vorder Brüglingen 5, Münchenstein/Basel, +41 61 319 97 80 **DIRECTIONS:** tram 10/11, bus 36/37/47 → Dreispitz; tram 14, bus 36/37/47 → St. Jakob **OPENING HOURS:** daily from 8 a.m. until sunset  
**TICKETS:** free admission

**23 MUKS – MUSEUM KULTUR & SPIEL RIEHEN** **CAFÉ, SHOP**

www.muks.ch **ADDRESS:** Baselstrasse 34, Riehen/Basel, +41 61 646 81 00  
**DIRECTIONS:** tram 6, bus 32 → Riehen Dorf; train S6 from Basel SBB or Basel Bad. Bahnhof → Riehen **OPENING HOURS:** Mon/Wed–Sun 11 a.m.–5 p.m.  
**TICKETS:** CHF 10/8/6, free admission under 16, MUSEUMS-PASS-MUSÉES: free admission, CH-MUSEUMSPASS: free admission

**24 MUSEUM.BL** **CAFÉ, SHOP &**

www.museum.bl.ch **ADDRESS:** Zeughausplatz 28, Liestal, +41 61 552 59 86  
**DIRECTIONS:** train from Basel SBB → Liestal; bus 80/81 from Aeschenplatz → Liestal Bahnhof  
**OPENING HOURS:** Tue–Fri 9 a.m.–4 p.m., Sat/Sun 10 a.m.–5 p.m. **TICKETS:** CHF 8/6, free admission under 13, each 1st Sun of the month: free admission, MUSEUMS-PASS-MUSÉES: free admission, CH-MUSEUMSPASS: free admission

**25 MUSEUM DER KULTUREN BASEL** **BISTRO/RESTAURANT,\* SHOP &**

www.mkb.ch **ADDRESS:** Münsterplatz 20, +41 61 266 56 00  
**DIRECTIONS:** tram 6/8/11/14/15/16/17; bus 31/33/34/36/38 → Schiffflände; tram 1/2/15 → Kunstmuseum **OPENING HOURS:** Tue–Sun 10 a.m.–5 p.m., each 1st Wed of the month 10 a.m.–8 p.m. **TICKETS:** CHF 16/5, free admission under 13, last opening hour: free admission, MUSEUMS-PASS-MUSÉES: free admission, CH-MUSEUMSPASS: free admission  
\* **OPENING HOURS BISTRO/RESTAURANT:** Tue/Wed/Sun 10 a.m.–6 p.m., Thu–Sat 10 a.m.–10 p.m.

**26 MUSEUM FÜR MUSIKAUTOMATEN** **BISTRO/RESTAURANT, SHOP &**

www.musikautomaten.ch **ADDRESS:** Bollhübel 1, Seewen SO, +41 58 466 78 80  
**DIRECTIONS:** train from Basel SBB → Liestal or Dornach/Arlesheim or Grellingen, change to Postbus → Seewen, Musikautomaten; bus 111 → Seewen, Zelgli, ca. 10 min. walk  
**OPENING HOURS:** Tue–Sun 11 a.m.–6 p.m. **TICKETS:** CHF 18/14.50/8, families CHF 36 (incl. tour), MUSEUMS-PASS-MUSÉES: free admission, CH-MUSEUMSPASS: free admission

**27 MUSEUM KLEINES KLINGENTAL** **CAFÉ, SHOP**

www.mkk.ch **ADDRESS:** Unterer Rheinweg 26, +41 61 267 66 25  
**DIRECTIONS:** tram 6/8/14/15/17, bus 31/34/38 → Rheingasse **OPENING HOURS:** Wed/Sat 2–5 p.m., Sun 10 a.m.–5 p.m. **TICKETS:** CHF 8/5, MUSEUMS-PASS-MUSÉES: free admission, CH-MUSEUMSPASS: free admission

**28 MUSEUM TINGUELY** **BISTRO/RESTAURANT, SHOP &**

www.tinguely.ch **ADDRESS:** Paul Sacher-Anlage 1, +41 61 681 93 20  
**DIRECTIONS:** bus 31/36/38/42 → Tinguely Museum **OPENING HOURS:** Tue/Wed/Fri–Sun 11 a.m.–6 p.m., Thu 11 a.m.–9 p.m. **TICKETS:** CHF 18/12, free admission under 17, Thu from 6. p.m.: free admission, MUSEUMS-PASS-MUSÉES: free admission, CH-MUSEUMSPASS: free admission

**29 NATURHISTORISCHES MUSEUM BASEL** **SHOP &**

www.nmbs.ch **ADDRESS:** Augustinergasse 2, +41 61 266 55 00  
**DIRECTIONS:** tram 6/8/11/14/15/16/17, bus 31/33/34/36/38 → Schiffflände; tram 1/2/15 → Kunstmuseum **OPENING HOURS:** Tue–Sun 10 a.m.–5 p.m., open on all public holidays except 24.12. and the Basel Fasnacht **TICKETS:** CHF 7/5, not incl. temporary exhibitions, free admission under 13, last opening hour Tue–Sat and each 1st Sun of the month (permanent exhibitions only): free admission, MUSEUMS-PASS-MUSÉES: free admission, CH-MUSEUMSPASS: free admission

**30 NOVARTIS PAVILLON** **CAFÉ\* &**

www.campus.novartis.com/novartis-pavillon **ADDRESS:** St. Johannis–Hafen–Weg 5, +41 61 324 11 11 **DIRECTIONS:** Tram 1 → Novartis Campus **OPENING HOURS:** Novartis Pavillon (exhibition) Tue–Sun 10 a.m.–6 p.m. **TICKETS:** CHF 10/7.50 with BASELCARD, free admission under 13, students/apprentices with student ID: free admission, RAIFFEISEN MEMBERPLUS: free admission, CH-MUSEUMSPASS: free admission  
\* **OPENING HOURS CAFÉ:** Tue–Fri 8 a.m.–6 p.m., Sat/Sun 10 a.m.–6 p.m.

**31 PHARMAZIEMUSEUM DER UNIVERSITÄT BASEL** **SHOP**

[www.pharmaziemuseum.ch](http://www.pharmaziemuseum.ch) **ADDRESS:** Totengässlein 3, +41 61 207 48 11  
**DIRECTIONS:** tram 6/8/11/14/15/16/17 → Marktplatz; bus 31/33/34/36/38 → Schiffände  
**OPENING HOURS:** Tue–Sun 10 a.m.–5 p.m. **TICKETS:** CHF 10/7 (incl. Anatomisches Museum der Universität Basel), MUSEUMS-PASS-MUSÉES: free admission, CH-MUSEUMSPASS: free admission

**32 SAM SCHWEIZERISCHES ARCHITEKTURMUSEUM** **SHOP**

[www.sam-basel.org](http://www.sam-basel.org) **ADDRESS:** Steinenberg 7, +41 61 261 14 13  
**DIRECTIONS:** tram 1/2/3/8/10/11/14/15 → Bankverein; tram 6/10/16/17 → Theater  
**OPENING HOURS:** Tue/Wed/Fri 11 a.m.–6 p.m., Thu 11 a.m.–8.30 p.m., Sat/Sun 11 a.m.–5 p.m. **TICKETS:** CHF 12/8 (incl. Kunsthalle Basel), free admission under 19, MUSEUMS-PASS-MUSÉES: free admission

**33 SAMMLUNG FRIEDHOF HÖRNLI**

[www.sammlunghoernli.ch](http://www.sammlunghoernli.ch) **ADDRESS:** Hörnliallee 70, Riehen/Basel, +41 61 601 50 68  
**DIRECTIONS:** bus 31/34/35/45 → Friedhof am Hörnli **OPENING HOURS:** each 1st and 3rd Sun of the month 10 a.m.–4 p.m. **TICKETS:** free admission  
\*Partially wheelchair-accessible

**34 SCHAULAGER** **CAFÉ, SHOP**

[www.schaulager.org](http://www.schaulager.org) **ADDRESS:** Ruchfeldstrasse 19, Münchenstein/Basel, +41 61 335 32 32 **DIRECTIONS:** tram 11, bus 60 → Schaulager  
Visits by school and university groups or for research purposes can be arranged at any time via application on the website.

**35 SPIELZEUG WELTEN MUSEUM BASEL** **BISTRO/RESTAURANT, SHOP**

[www.swmb.museum](http://www.swmb.museum) **ADDRESS:** Steinen vorstadt 1, +41 61 225 95 95  
**DIRECTIONS:** tram 3/6/8/11/14/15/16/17 → Barfüsserplatz; tram 6/10/16/17 → Theater  
**OPENING HOURS:** Jan–Nov: Tue–Sun 10 a.m.–6 p.m., Dec: daily 10 a.m.–6 p.m. (special opening hours, see [www.swmb.museum](http://www.swmb.museum)) **TICKETS:** CHF 7/5, free admission under 17 (please note that children under 13 must be accompanied by an adult), MUSEUMS-PASS-MUSÉES: free admission, CH-MUSEUMSPASS: free admission

**36 VITRA DESIGN MUSEUM** **CAFÉ, BISTRO/RESTAURANT, SHOP**

[www.design-museum.de](http://www.design-museum.de) **ADDRESS:** Charles-Eames-Strasse 2, Weil am Rhein DE, +49 7621 702 32 00 **DIRECTIONS:** Tram 8 → Weil am Rhein Bahnhof; bus 55 from Claraplatz → Vitra **OPENING HOURS:** daily 10 a.m.–6 p.m.  
**TICKETS:** Museum EUR 16/13, Schaudapot EUR 13/10, combined ticket EUR 23/21, free admission under 13, MUSEUMS-PASS-MUSÉES: free admission

## PUBLICATION DETAILS

**EDITED AND PUBLISHED BY:**

Division of Cultural Affairs, Canton Basel-Stadt,  
Münzgasse 16, CH-4001 Basel, +41 61 267 84 01,  
[www.bs.ch/kultur](http://www.bs.ch/kultur), [info@museenbasel.ch](mailto:info@museenbasel.ch), [www.museenbasel.ch](http://www.museenbasel.ch)

**DESIGN:** Andreas Hidber, Accent Graphe, Basel

**PORTRAITS OF MUSEUM EMPLOYEES:** Christian Knörr, Basel; Fondation Beyeler:  
Gina Folly, Basel; Kunstmuseum Basel: Renée Levi: *Mira*, 2025, Kunstmuseum Basel,  
gift of the artist, © 2025, ProLitteris, Zurich, photo: Max Ehrenguber

**PRINTED BY:** Gremper AG, Pratteln/Basel

**COPY DEADLINE:** October 2025, subject to change

© Division of Cultural Affairs, Canton Basel-Stadt  
© photographs: individual museums

Admission to the collections of the  
Basel-Stadt museums is free at certain times.  
**[www.museenbasel.ch](http://www.museenbasel.ch)**

**ADDITIONAL INFORMATION:**

Basel Tourism, Tourist Information inside the Stadtcasino  
at Barfüsserplatz, Steinenberg 14, CH-4051 Basel  
Mon–Fri 9 a.m.–6.30 p.m., Sat 9 a.m.–5 p.m., Sun 10 a.m.–3 p.m.

**+41 61 268 68 68, [info@basel.com](mailto:info@basel.com), [www.basel.com](http://www.basel.com)**

# The fine art of printing



Grempers AG  
Basel / Pratteln  
[www.grempers.ch](http://www.grempers.ch)

**grempers**®



© Emil Ferris,  
«My Favorite Thing is Monsters»,  
Book Two, 2024 (Detail)

00

Cartoonmuseum Basel  
Centre for  
Narrative Art

**Emil Ferris**  
4.7.–15.11.2026



THE JOY OF REPAIRING

**FIX  
IT!**

**MUSEUM.BL**

**Liestal**

**29.3.2025 – 30.8.2026**



# Ramstein Optik



Seeing more beautiful  
since 1899

**Sunglasses**

**Opticals**

**Contact lenses**

**Sport glasses**



Discover and  
experience Basel's  
most playful museum.



**Spielzeug Welten  
Museum Basel**

Museum, Shop and Restaurant  
Tue–Sun 10 a.m.–6 p.m.  
Open daily in December  
Steinvorstadt 1 | CH–4051 Basel  
[www.swmb.museum](http://www.swmb.museum)